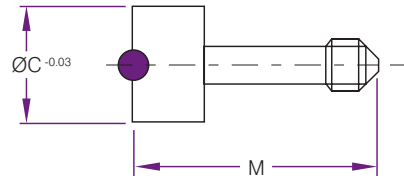


Materials: INOX. 1.4034  
Hardness: 51 ± 3 HRC.  
Max. working temp 150°C Patented System

Inner insert is always at the same level as the body of the date stamp.  
Wide range of diameters. Only a H7 pocket required for assembly.  
No downtime when changing inserts. Internal mechanism guarantees secure replacement of inserts.



12 Months	12 Months + Year	Year	Blank	A	C	D	E	L	N
FA0422SF	FA042212-...	FA042204-...	FA042200	4	2.2	6	3.5	12	4
FA0530SF	FA053012-...	FA053004-...	FA053000	5	3	6	3.5	12	4
FA0632SF	FA063212-...	FA063205-...	FA063200	6	3.2	12	4	20	5
FA0847SF	FA084712-...	FA084705-...	FA084700	8	4.7	12	6	20	5
FA1057SF	FA105712-...	FA105706-...	FA105700	10	5.7	12	8	20	6
FA1267SF	FA126712-...	FA126708-...	FA126700	12	6.7	12	10	20	8
FA1687SF	FA168712-...	FA168710-...	FA168700	16	8.7	12	12	20	10
FA2007SF	FA200712-...	FA200710-...	FA200700	20	10.7	12	14	20	10

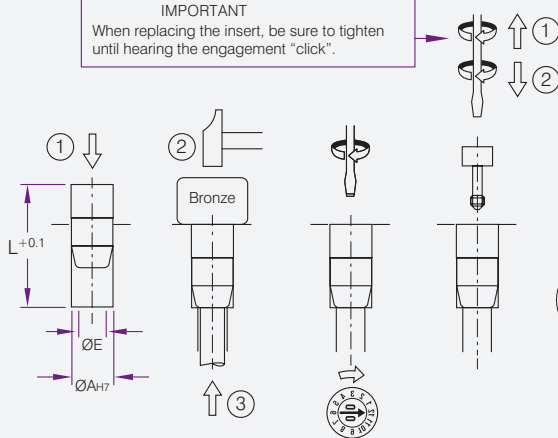


Material: INOX. 1.4034  
Hardness: 51 ± 3 HRC.  
Max. working temp 150°C Patented System

Year + Arrow



**IMPORTANT**  
When replacing the insert, be sure to tighten until hearing the engagement "click".



Arrow Only



### Year and Arrow

Product Code	C	M
IA2275 . .	2.2	7.5
IA3075 . .	3	7.5
IA3217 . .	3.2	17
IA4717 . .	4.7	17
IA5717 . .	5.7	17
IA6717 . .	6.7	17
IA8717 . .	8.7	17
IA1007 . .	10.7	17

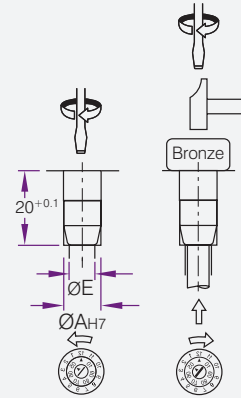
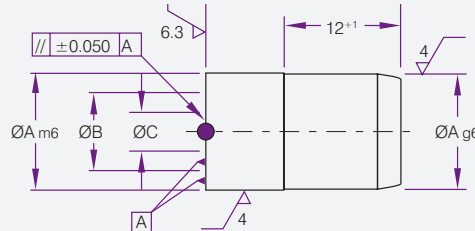
### Arrow Only

Product Code	C	M
IA2275SF	2.2	7.5
IA3075SF	3	7.5
IA3217SF	3.2	17
IA4717SF	4.7	17
IA5717SF	5.7	17
IA6717SF	6.7	17
IA8717SF	8.7	17
IA1007SF	10.7	17



Materials: INOX. 1.4034  
 Hardness: 51 ± 3 HRC.  
 Maximum working temperature 100°C.  
 Patented System

Replaces the need for 2 separate date stamps. No need to machine 2 separate holes. Minimum space required for installation.

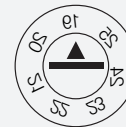
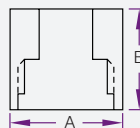


12 Months + Year	Blank	A	B	C	E	N
FD080512-..	FD080500	8	5.5	3	6	5
FD120812-..	FD120800	12	8	4	10	6
FD161012-..	FD161000	16	10.5	5.3	12	10

Mould Identification Month/Year Inserts



A = Diameter/Tolerance = +.00  
 -.02  
 B = Length/Tolerance = ± .03

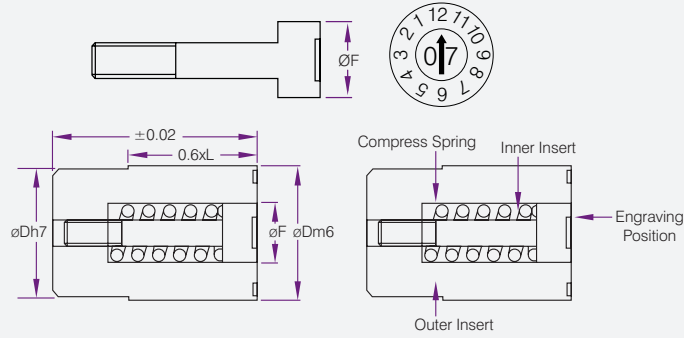


Product Code	A	B
DY-08	Dia 8.00	10.00
DY-10	Dia 10.00	10.00
DY-12	Dia 12.00	12.00
DY-16	Dia 16.00	14.00

Product Code	A	B
DM-08	Dia 8.00	10.00
DM-10	Dia 10.00	10.00
DM-12	Dia 12.00	12.00
DM-16	Dia 16.00	14.00



Materials: INOX. 1.4034  
 Hardness: 51 ± 3 HRC.  
 Max. working temp 150°C Patented System



Indication	DIA	Product Code	DIA	Product Code
	6	CCMY_*_06	12	CCMY_*_12
	8	CCMY_*_08	16	CCMY_*_16
	10	CCMY_*_10	20	CCMY_*_20
	6	CCMA0006	12	CCMA0012
	8	CCMA0008	16	CCMA0016
	10	CCMA0010	20	CCMA0020
	6	CCYA_*_06	12	CCYA_*_12
	8	CCYA_*_08	16	CCYA_*_16
	10	CCYA_*_10	20	CCYA_*_20
	12	CCDA0012	20	CCDA0020
	16	CCDA0016	20	CCDA0020
	6	CCNA0006	12	CCNA0012
	8	CCNA0008	16	CCNA0016
	10	CCNA0010	20	CCNA0020
	6	CCSA0006	12	CCSA0012
	8	CCSA0008	16	CCSA0016
	10	CCSA0010	20	CCSA0020
	6	CCBA0006	12	CCBA0012
	8	CCBA0008	16	CCBA0016
	10	CCBA0010	20	CCBA0020

Indication	DIA	Product Code	DIA	Product Code
Year	3.1	CIY_*_06	6.2	CIY_*_12
	4.2	CIY_*_08	8.2	CIY_*_16
	5.2	CIY_*_10	11	CIY_*_20
Arrow	3.1	CIA0006	6.2	CIA0012
	4.4	CIA0008	8.2	CIA0016
	5.2	CIA0010	11	CIA0020
Month	6	COM0006	12	COM0012
	8	COM0008	16	COM0016
	10	COM0010	20	COM0020
Year	6	COY_*_06	12	COY_*_12
	8	COY_*_08	16	COY_*_16
	10	COY_*_10	20	COY_*_20
Day	12	COD0012	20	COD0020
	16	COD0016	20	COD0020
Numbers	6	CON0006	12	CON0012
	8	CON0008	16	CON0016
	10	CON0010	20	CON0020
Shift	6	COS0006	12	COS0012
	8	COS0008	16	COS0016
	10	COS0010	20	COS0020
Blank	6	COB0006	12	COB0012
	8	COB0008	16	COB0016
	10	COB0010	20	COB0020

Dimensions			
DIA	D	L	F
6	6	8	3.1
8	8	10	4.4
10	10	12	5.2
12	12	14	6.2
16	16	14	8.2
20	20	16	11