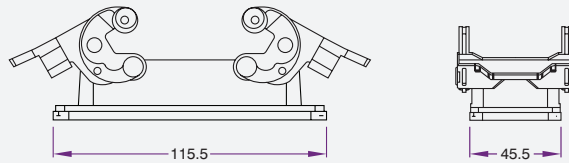
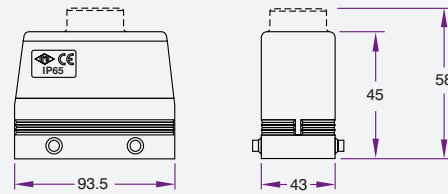


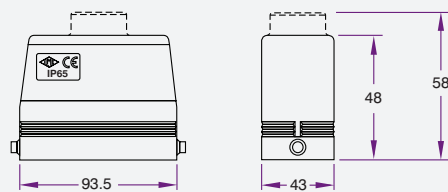
Product Code	Description
CHI16L	16 Pin Multipole Connector Single Lever Housing



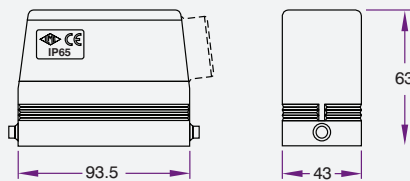
Product Code	Description
CHI16	16 Pin Multipole Connector Double Lever Housing



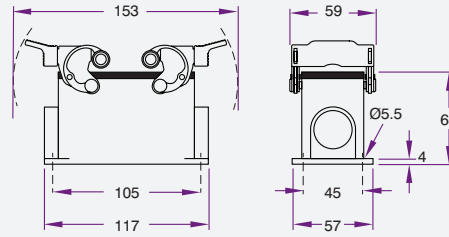
Product Code	Description
MHV16.25	16 Pin Multipole Connector Double Lever Cable Housing



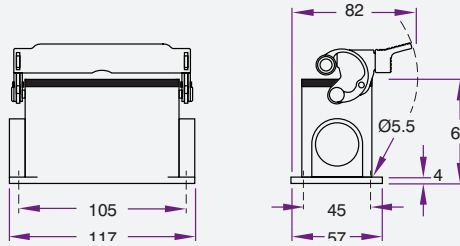
Product Code	Description
MHV16L25	16 Pin Multipole Connector Single Lever Cable Housing



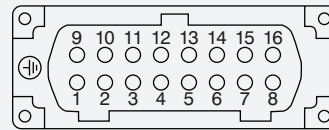
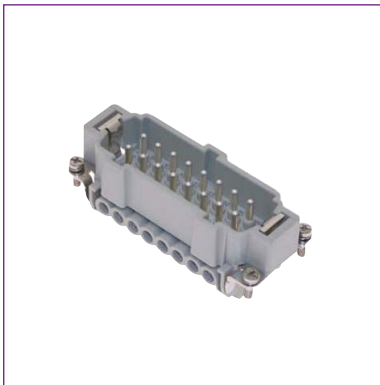
Product Code	Description
MHO16L25	16 Pin Multipole Connector Single Lever Cable Housing Side Entry



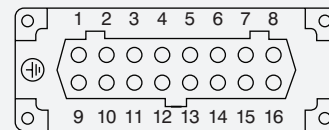
Product Code	Description
MHP16.225	16 Pin Multipole Connector Double Lever High Housing



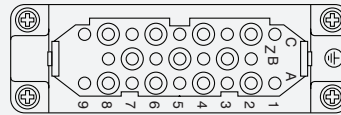
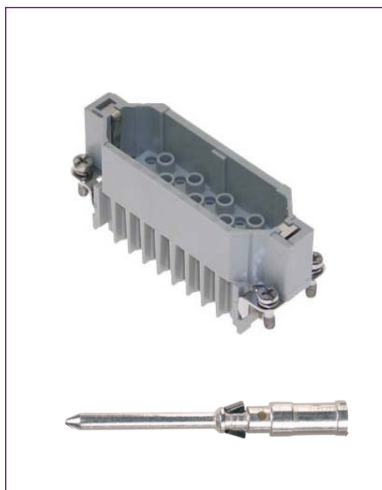
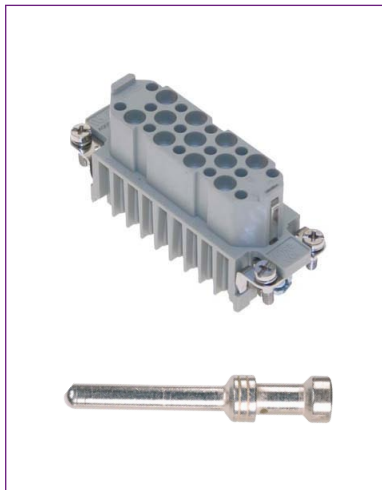
Product Code	Description
MHP16L225	16 Pin Multipole Connector Single Lever High Housing



Product Code	Description
CNEM16T	16 Pin Multipole Connector Male Insert 16 Amp 400 Volt

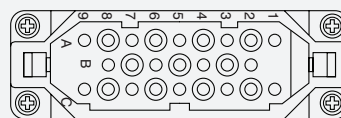


Product Code	Description
CNEF16T	16 Pin Multipole Connector Female Insert 16 Amp 400 Volt



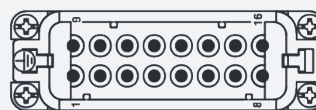
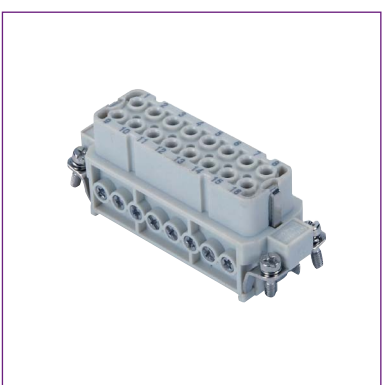
Pins Sold Separately

Product Code	Description
CDF25	25 Pin Multipole Connector Female Insert 16 Amp 400 Volt (Crimp)
CDFA1.5	Female Pins for CDF25

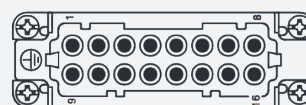


Pins Sold Separately

Product Code	Description
CDM25	25 Pin Multipole Connector Male Insert 16 Amp 400 Volt (Crimp)
CDMA1.5	Male Pins for CDM25



Product Code	Description
CDAM16	16 Pin Multipole Connector Male Insert 16 Amp 400 Volt



Product Code	Description
CDAF16	16 Pin Multipole Connector Female Insert 16 Amp 400 Volt