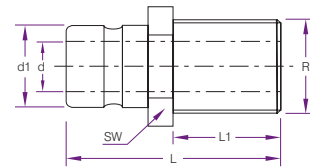
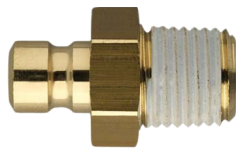
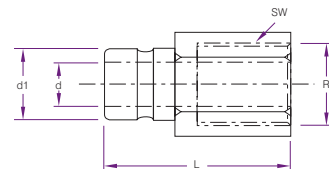


*Also available with internal valve, specify "V".

Product Code	Series	R (BSPT)	d1	d	H	A	L
CM251	200 Series	1/8	9.5	6	17	22	25
CM252		1/4	9.5	6	19	26	29
CM253		3/8	9.5	6	19	30	30
CM351	300 Series	1/8	13.5	6	25	26	35
CM352*		1/4	13.5	9	25	26	35
CM353*		3/8	13.5	9	26	30	38
CM354		1/2	13.5	9	28	37	42
CM552	500 Series	1/4	20	9	37	30	41
CM553		3/8	20	12	37	32	41
CM554		1/2	20	15	38	32	39
CM556		3/4	20	15	38	38	45



Product Code	Series	R (BSPT)	d1	d	L	L1	SW
CMT251	200 Series	1/8	9.5	6	24	9	13
CMT252		1/4	9.5	6	29	12	17
CMT253		3/8	9.5	6	30	12	19
CMT352	300 Series	1/4	13.5	9	34	12	17
CMT353		3/8	13.5	9	34	12	19
CMT354		1/2	13.5	9	39	17	24
CMT554	500 Series	1/2	20	15	44	17	22
CMT556		3/4	20	15	45	19	29



Product Code	Series	R (BSPT)	d1	d	L	SW
CM251F	200 Series	1/8	9.5	6	28	13
CM252F		1/4	9.5	6	32	17
CM253F		3/8	9.5	6	34	19
CM352F	300 Series	1/4	13.5	9	37	17
CM353F		3/8	13.5	9	39	19
CM354F		1/2	13.5	9	46	24