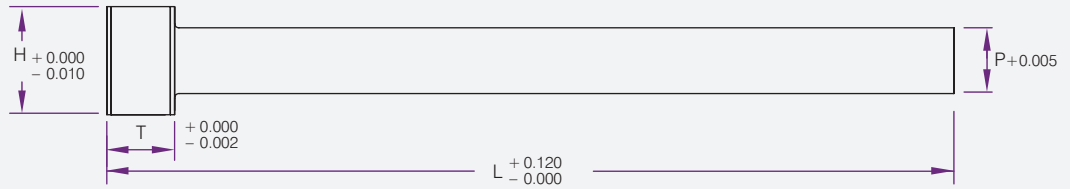




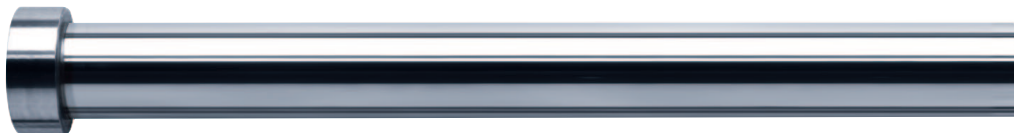
**Material:** H13  
**Hardness:**  
 Core = 40-45RC  
 Surface = 70-72RC



Product Code	P	H	T	L	Over Size
E0810 - OS	1/8	1/4	1/8	10"	+0.005
E1010 - OS	5/32	9/32	5/32	10"	+0.005
E1210 - OS	3/16	3/8	3/16	10"	+0.005
E1610 - OS	1/4	7/16	3/16	10"	+0.005
E2010 - OS	5/16	1/2	1/4	10"	+0.005
E2025 - OS	5/16			25"	+0.005
E2410 - OS	3/8	5/8	1/4	10"	+0.005
E2425 - OS	3/8			25"	+0.005
E2810 - OS	7/16	11/16	1/4	10"	+0.005
E3210 - OS	1/2	3/4	1/4	10"	+0.005

Soft Pins - Imperial

EJECTOR PINS



**Material:** H13  
**Hardness:** 40-45RC



P	H	T	Product Code	
			L 6"	L 10"
1/8	1/4	1/8	ES0406	ES0410
5/32	9/32	5/32	ES0506	ES0510
1/8			ES0806	ES0810
5/32	9/32	5/32	ES1006	ES1010
3/16	3/8	3/16	ES1206	ES1210
7/32	13/32	3/16	ES1406	ES1410
1/4	7/16	3/16	ES1606	ES1610
9/32	7/16	1/4		ES1810

P	H	T	Product Code		
			L 6"	L 10"	L 14"
5/16	1/2	1/4		ES2010	
3/8	5/8	1/4	ES2406	ES2410	ES2414
7/16	11/16	1/4	ES2806	ES2810	ES2814
1/2	3/4	1/4	ES3206	ES3210	ES3214
9/16		1/4	ES3606		
5/8	7/8	1/4	ES4006	ES4010	ES4014
3/4	1	1/4	ES4806	ES4810	ES4814