



**Material:**

1.2067 Hardened Steel

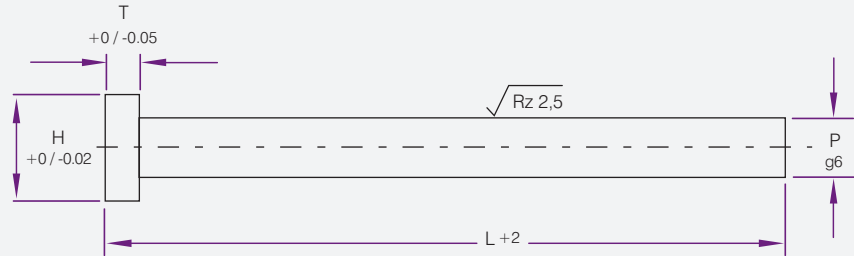
**Standard:**

DIN1530-AH / ISO6751

**Hardness:**

Head = HRC45+/- 5

Shaft = HRC60+/-2 Through Hardened



**Note:**

Please note some items are special orders.

P	H	T	Product Code				
			L 100	L 125	L 160	L 200	L 250
1.0	2.5	1.2	HED0100100		HED0100160		
1.2	2.5	1.2	HED0120100				
1.5	3	1.5	HED0150100	HED0150125	HED0150160		HED0150250
1.6	3	1.5	HED0160100		HED0160160		
2.0	4	2	HED0200100	HED0200125	HED0200160	HED0200200	HED0200250
2.2	4	2	HED0220100	HED0220125			HED0220250
2.5	5	2	HED0250100	HED0250125	HED0250160	HED0250200	HED0250250
2.7	5	2	HED0270100	HED0270125	HED0270160	HED0270200	HED0270250
3.0	6	3	HED0300100		HED0300160	HED0300200	HED0300250
3.2	6	3		HED0320125	HED0320160	HED0320200	HED0320250
3.5	7	3	HED0350100	HED0350125	HED0350160	HED0350200	HED0350250
3.7	7	3	HED0370100	HED0370125	HED0370160	HED0370200	HED0370250
4.0	8	3	HED0400100	HED0400125	HED0400160	HED0400200	HED0400250
4.2	8	3	HED0420100	HED0420125	HED0420160	HED0420200	HED0420250
4.5	8	3	HED0450100		HED0450160	HED0450200	HED0450250
5.0	10	3	HED0500100	HED0500125	HED0500160	HED0500200	HED0500250
5.2	10	3			HED0520160		HED0520250
5.5	10	3	HED0550100	HED0550125	HED0550160	HED0550200	HED0550250
6.0	12	5	HED0600100	HED0600125	HED0600160	HED0600200	HED0600250
6.2	12	5		HED0620125			
6.5	12	5	HED0650100	HED0650125	HED0650160	HED0650200	HED0650250
7.0	12	5	HED0700100			HED0700200	HED0700250
7.5	12	5	HED0750100	HED0750125	HED0750160	HED0750200	HED0750250
8.0	14	5	HED0800100	HED0800125	HED0800160	HED0800200	HED0800250
8.2	14	5	HED0820100	HED0820125		HED0820200	
8.5	14	5	HED0850100	HED0850125	HED0850160	HED0850200	HED0850250
9.0	14	5	HED0900100		HED0900160	HED0900200	HED0900250
10.0	16	5	HED1000100	HED1000125	HED1000160	HED1000200	HED1000250
10.2	16	5	HED1020100			HED1020200	
10.5	16	5	HED1050100	HED1050125	HED1050160	HED1050200	HED1050250
11.0	16	5	HED1100100		HED1100160	HED1100200	HED1100250
12.0	20	7	HED1200100	HED1200125	HED1200160	HED1200200	HED1200250
12.2	20	7		HED1220125		HED1220200	
12.5	20	7	HED1250100	HED1250125	HED1250160	HED1250200	HED1250250
13.0	20	7					HED1300250
14.0	22	7	HED1400100		HED1400160	HED1400200	HED1400250
16.0	22	7	HED1600100	HED1600125	HED1600160	HED1600200	HED1600250
18.0	24	7	HED1800100	HED1800125	HED1800160	HED1800200	HED1800250
20.0	26	8	HED2000100	HED2000125	HED2000160	HED2000200	HED2000250
25.0	32	10			HED2500160	HED2500200	HED2500250
32.0	40	10				HED3200200	HED3200250



**Material:**

1.2067 Hardened Steel

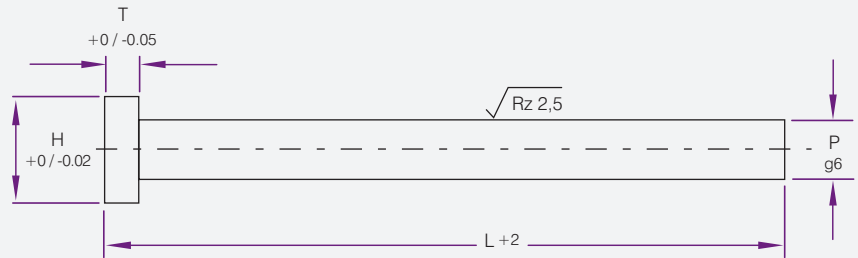
**Standard:**

DIN1530-AH / ISO6751

**Hardness:**

Head = HRC45+/- 5

Shaft = HRC60+/-2 Through Hardened



**Note:**

Please note some items are special orders.

P	H	T	Product Code			
			L 315	L 400	L 500	L 630
2.0	4	2	HED0200315			
2.2	4	2	HED0220315			
2.5	5	2	HED0250315			
2.7	5	2	HED0270315			
3.0	6	3	HED0300315	HED0300400		
3.2	6	3	HED0320315	HED0320400		
3.5	7	3	HED0350315	HED0350400		
3.7	7	3	HED0370315	HED0370400		
4.0	8	3	HED0400315	HED0400400	HED0400500	
4.2	8	3	HED0420315	HED0420400	HED0420500	
4.5	8	3	HED0450315	HED0450400	HED0450500	
5.0	10	3	HED0500315	HED0500400	HED0500500	
5.2	10	3	HED0520315	HED0520400	HED0520500	
5.5	10	3	HED0550315	HED0550400	HED0550500	
6.0	12	5	HED0600315	HED0600400	HED0600500	HED0600630
6.2	12	5		HED0620400	HED0620500	HED0620630
6.5	12	5	HED0650315	HED0650400	HED0650500	HED0650630
7.0	12	5	HED0700315	HED0700400	HED0700500	HED0700630
7.5	12	5	HED0750315	HED0750400	HED0750500	HED0750630
8.0	14	5	HED0800315	HED0800400	HED0800500	HED0800630
8.2	14	5		HED0820400	HED0820500	HED0820630
8.5	14	5	HED0850315	HED0850400	HED0850500	HED0850630
9.0	14	5	HED0900315	HED0900400	HED0900500	HED0900630
10.0	16	5	HED1000315	HED1000400	HED1000500	HED1000630
10.2	16	5		HED1020400	HED1020500	HED1020630
10.5	16	5	HED1050315	HED1050400	HED1050500	HED1050630
11.0	16	5	HED1100315	HED1100400	HED1100500	HED1100630
12.0	20	7	HED1200315	HED1200400	HED1200500	HED1200630
12.2	20	7		HED1220400	HED1220500	HED1220630
12.5	20	7	HED1250315	HED1250400	HED1250500	HED1250630
14.0	22	7	HED1400315	HED1400400	HED1400500	HED1400630
16.0	22	7	HED1600315	HED1600400	HED1600500	HED1600630
18.0	24	7	HED1800315	HED1800400	HED1800500	HED1800630
20.0	26	8	HED2000315	HED2000400	HED2000500	HED2000630
25.0	32	10	HED2500315	HED2500400	HED2500500	HED2500630
32.0	40	10	HED3200315	HED3200400	HED3200500	HED3200630