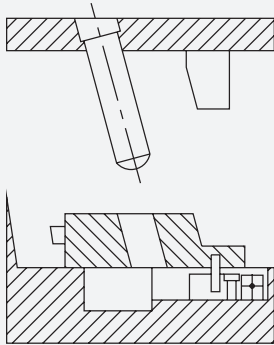
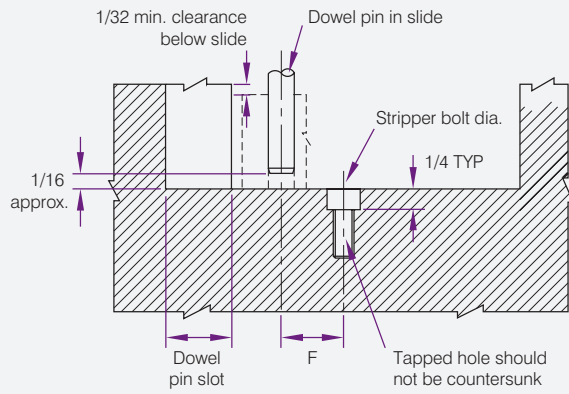
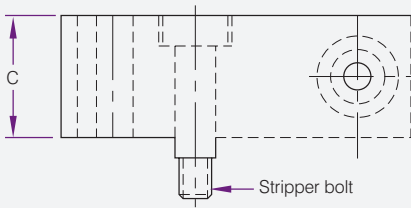
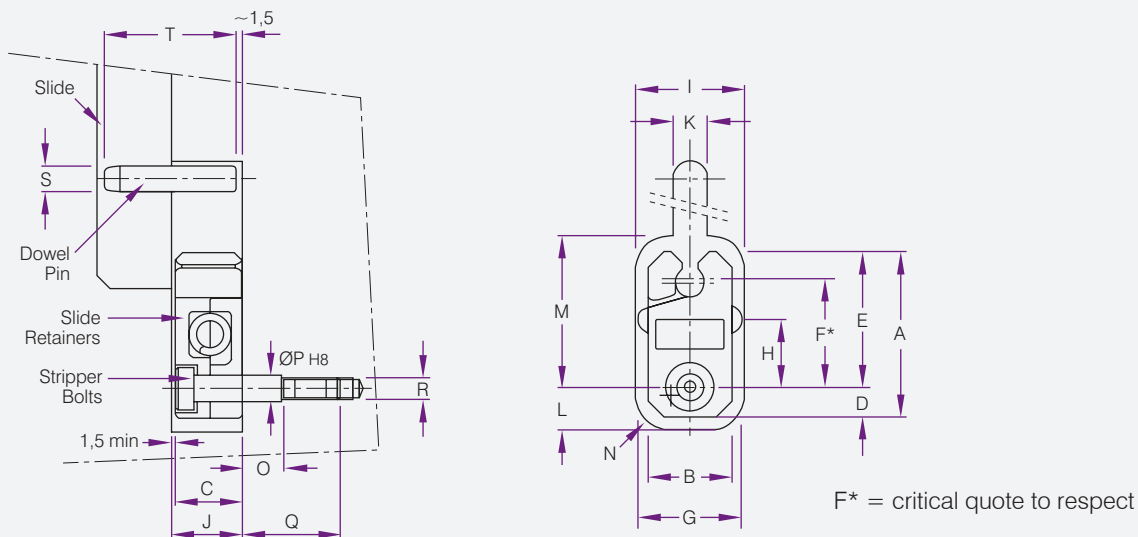


Typical Slide Retainer Application

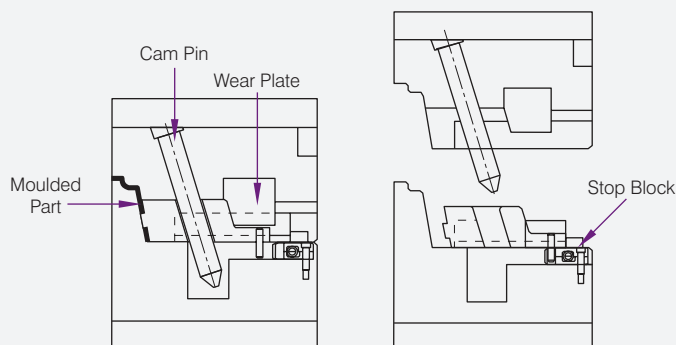


Dimensions							R	Stop	Stop	Max Slide					
Product Code	A	B	C	D	E	F	Rad	Pin	Pin L	Weight	G	H	J	K	S
MRT10M	38	19	16	22	16	9.15	5	6	30	10kg	19	26	25	5x8 .8x10	8
MRT20M	54	32	20	33	21	12.70	6	8	40	20kg	24	36	38	6x1 .0x12	10
MRT40M	86	45	30	53	33	20.30	10	10	60	40kg	36	56	51	8x1 .25x14	13



The slide retainers are mechanical components that allow the stop and the perfect positioning of mechanical trolley used to free the undercut.

- a* = max. slide weight
- b* = stripper bolt
- c* = max. opening force in Nm



Product Code	Cam Slide									a*	b*	
	A	B	C	D	E	F	G	H	I	Newton	Ref.	c*
OESR0001	38	19	16	7	31,5	24,89	24,0	15,5	25,5	150	SB5x20	10
OESR0002	54	32	20	11	43,0	34,93	36,5	22,5	38,0	250	SB6x25	15
OESR0003	86	45	30	19	67,0	53,98	49,5	40,0	51,0	500	SB8x40	20

Product Code	Retainer seat in mould									Dowel Pin	
	J min	K	L	M	N	O	P	Q	R	S	T
OESR0001	17,5	8	10,0	34,5	8	8,5	6	20	M5	6	32
OESR0002	21,5	10	14,5	46,0	10	10,5	8	25	M6	8	40
OESR0003	31,5	12	22,5	70,0	12	17,0	10	35	M8	10	60