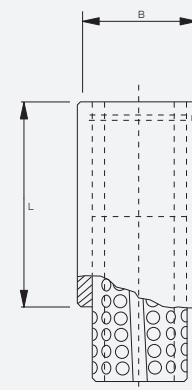




The EBB bush and cage is designed to be fitted inside the top bolster as the ball cage is captive inside the bush.

The advantage of this design is to eliminate any foreign bodies entering the sensitive ball cage area causing damage.

Product Code	B	L
EBB1x3.43	1.9855	3.43
EBB1x4.43	1.9855	4.43
EBB1.25x3.93	2.235	3.93
EBB1.25x4.93	2.235	4.93
EBB1.5x4.18	2.485	4.18
EBB1.5x5.18	2.485	5.18
EBB1.75x4.43	2.985	4.43
EBB1.75x5.43	2.985	5.43
EBB2x5	3.235	5.00
EBB2x6	3.235	6.00



Product Code	A	L
EBP1x4.5	0.9855	4.5
EBP1x5.25	0.9855	5.25
EBP1x5.75	0.9855	5.75
EBP1x6.5	0.9855	6.5
EBP1x7	0.9855	7
EBP1x7.5	0.9855	7.5
EBP1x8	0.9855	8
EBP1x8.5	0.9855	8.5
EBP1x9	0.9855	9
EBP1x10	0.9855	10
EBP1.25x5.25	1.2355	5.25
EBP1.25x5.75	1.2355	5.75
EBP1.25x6.5	1.2355	6.5
EBP1.25x7	1.2355	7
EBP1.25x7.5	1.2355	7.5
EBP1.25x8	1.2355	8
EBP1.25x8.5	1.2355	8.5
EBP1.25x10.00	1.2355	10
EBP1.5x6	1.4855	6
EBP1.5x6.75	1.4855	6.75
EBP1.5x7.5	1.4855	7.5
EBP1.5x8.5	1.4855	8.5
EBP1.5x10	1.4855	10
EBP1.5x11	1.4855	11
EBP1.5x12	1.4855	12
EBP1.75x7.5	1.7355	7.5
EBP1.75x8.5	1.7355	8.5
EBP1.75x9.5	1.7355	9.5
EBP1.75x10	1.7355	10
EBP1.75x11	1.7355	11
EBP1.75x12	1.7355	12
EBP2x7.5	1.9855	7.5
EBP2x8.5	1.9855	8.5
EBP2x9.5	1.9855	9.5
EBP2x10	1.9855	10
EBP2x11	1.9855	11
EBP2x12	1.9855	12

