

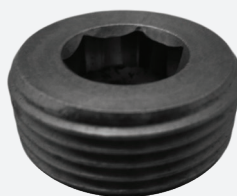


Some sizes available in: Threads: UNC, UNF, BSF. Sizes: 7/16, 7/8, 1 1/4, 1 1/2 also available

Length	IMPERIAL			
	1/2	5/8	3/4	1"
1/2		UCAP1258	UCAP1234	
5/8	UCAP1258			
3/4	UCAP1234			
1	UCAP121	UCAP581		
1 1/4	UCAP12114	UCAP58114	UCAP34114	
1 1/2	UCAP12112	UCAP58112	UCAP34112	UCAP1112
1 3/4	UCAP12134	UCAP58134	UCAP34134	
2	UCAP122	UCAP582	UCAP342	UCAP12
2 1/4	UCAP12214	UCAP58214	UCAP34214	
2 1/2	UCAP12212	UCAP58212	UCAP34212	UCAP1212
2 3/4	UCAP12234			
3	UCAP123	UCAP583	UCAP343	UCAP13
3 1/4	UCAP12314			
3 1/2	UCAP12312	UCAP58312	UCAP34312	UCAP1312
4	UCAP124	UCAP584	UCAP344	UCAP14
4 1/2	UCAP12412	UCAP58412	UCAP34412	
5	UCAP125	UCAP585	UCAP345	UCAP15
5 1/2	UCAP12512	UCAP58512	UCAP34512	
6	UCAP126	UCAP586	UCAP346	UCAP16
6 1/2	UCAP12612	UCAP58612	UCAP34612	
7	UCAP127	UCAP587	UCAP347	UCAP17
8	UCAP128	UCAP588	UCAP348	UCAP18
9			UCAP349	UCAP19

MOULD MAINTENANCE AND SET UP

Steel Pressure Plugs



Product Code	Size	Height
UPLUG18	1/8	.382
UPLUG14	1/4	.503
UPLUG38	3/8	.559
UPLUG12	1/2	.691
UPLUG58	5/8	.731
UPLUG34	3/4	.815
UPLUG1	1	.998