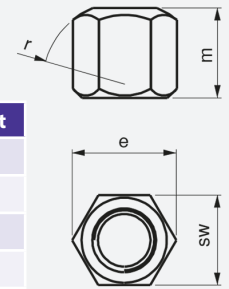




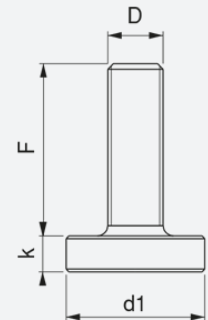
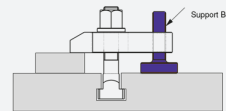
- Hardened
- Black Coating

Product Code	SW	e	m	r	Weight
MC-HN-M12	19 mm	21.9 mm	18 mm	17 mm	25 g
MC-HN-M16	24 mm	27.7 mm	24 mm	22 mm	55 g
MC-HN-M20	30 mm	34.6 mm	30 mm	27 mm	110 g
MC-HN-M24	36 mm	41.5 mm	36 mm	32 mm	190 g



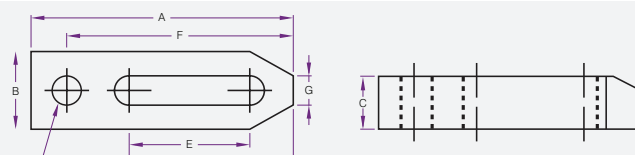
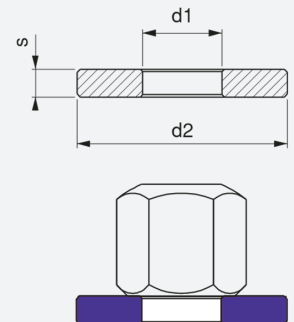
- Black Coating

Product Code	d1	k	Weight
MC-SB-M12x50	36 mm	10 mm	110 g
MC-SB-M16x62	45 mm	13 mm	240 g
MC-SB-M20x62	50 mm	13 mm	320 g
MC-SB-M24x116	50 mm	14 mm	555 g



- Hardened
- Black Coating

Product Code	d1	d2	s	Weight
MC-TW-M12	13 mm	35 mm	5 mm	30 g
MC-TW-M16	17 mm	45 mm	6 mm	60 g
MC-TW-M20	21 mm	50 mm	6 mm	70 g
MC-TW-M24	25 mm	60 mm	8 mm	140 g



Product Code	Model	A	B	C	D	E	F	G	H
MC12	M12 x 100mm	100	32	19	71	43	88	13	M12
MC16	M16 x 150mm	150	37	25	100	60	130	17	M16
MC20	M20 x 200mm	200	50	32	114	82	185	21	M20
MC25	M25 x 250mm	250	70	45	157	100	224	27	1"BSW