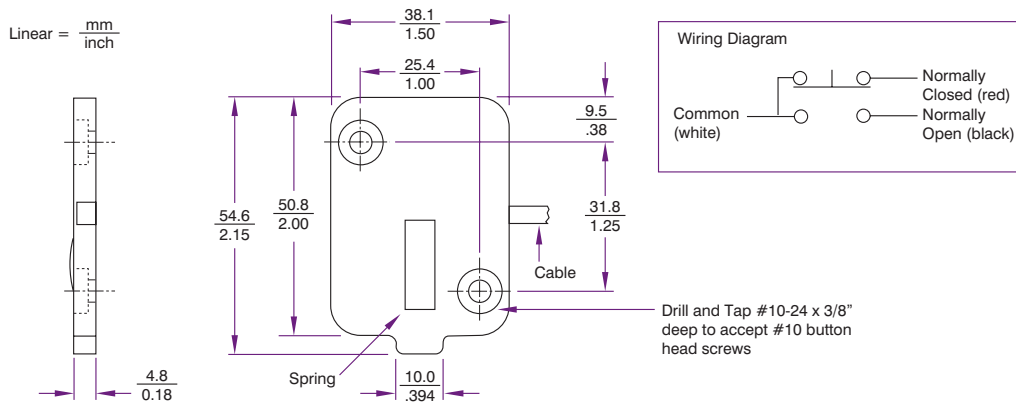


Smartflow Thinswitch® Limit Switch

Designed to verify ejector plate return. The Thinswitch helps prevent accidental mould close in injection moulding applications by providing a position switch that is tied to the injection moulding machine control. Two switches can be used in series for larger moulds to ensure the ejector plate return, preventing costly mould damage.

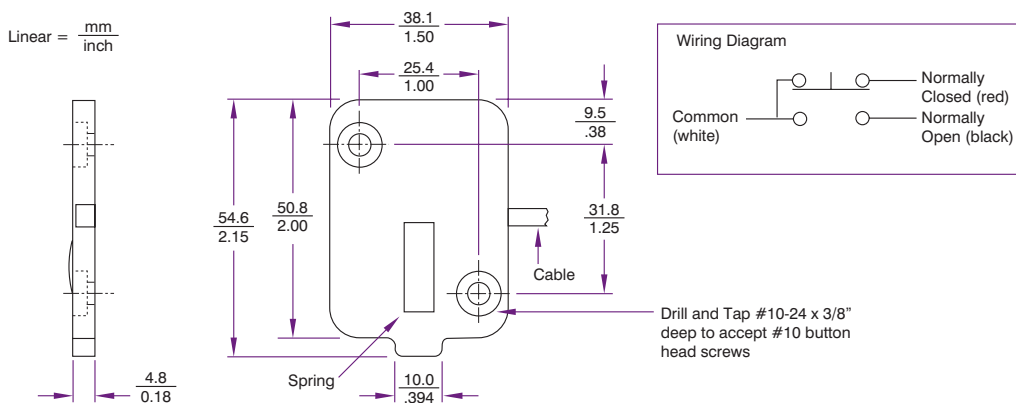


Product Code	Description	Max Temp.
T-222	Thinswitch® Limit Switch	175°F / 79.4°C



Thinswitch® Liquid Resistant Limit Switch

- Designed to verify ejector plate return in areas where occasional water or oil spray is present
- Helps prevent accidental mould close by providing a position switch that is tied to the machine control
- Uses the same mounting hole locations as the original Thinswitch

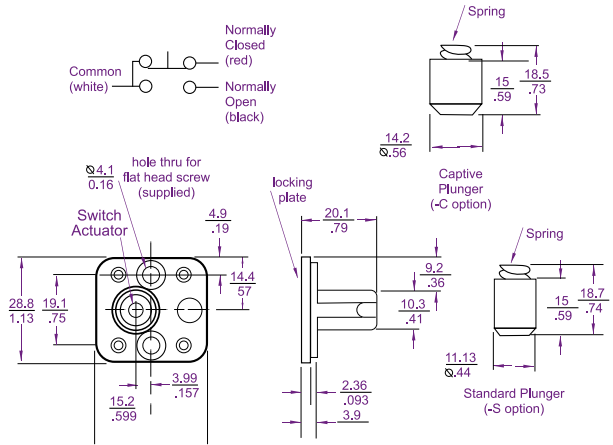
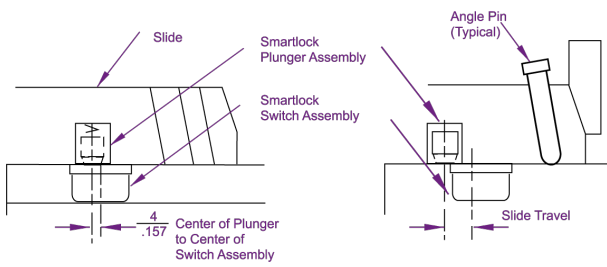


Product Code	Description	Max Temp.
HT-291-LR	Thinswitch® Liquid Resistant Limit Switch	250°F / 121°C



Smartlock® Core Slide Retainer & Limit Switch

- Over 10 million cycle life · Temperature max. 79.4°C @ 2 A load
- 17-27 pounds holding force
- Superior flush mounted switch
- Optional High Temperature model max. 121.1°C @ 3.5 A load



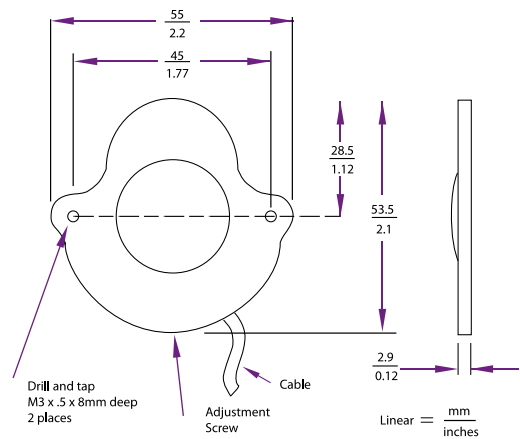
Product Code	Description	Max Temp.
SL-222	Smart Lock	175°F / 79.4°C

Global Thinswitch®



The Global Thinswitch® Limit Switch

- Liquid resistant · Over 14 million cycle life
- Only 3 or 4mm Thick · Temperature max. 79.4°C @ 70 mA load
- 2 minute fitting (No milling necessary)



Product Code	Description	Max Temp.
TW-222-LR	Global Thinswitch	175°F / 79.4°C