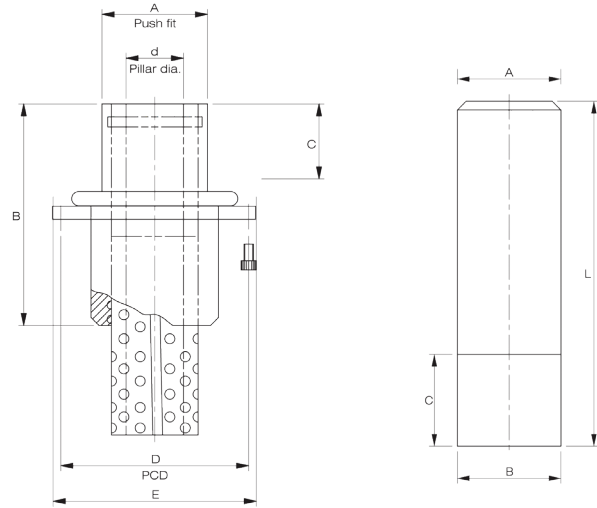




Preloaded for high precision applications.

- Captive ball cage.
- Recommended for high-speed operations.
- Flanged mounting
- Spiro-helical ball pattern for extended life.



Product Code	d	A	B	C	D	E
EXBB 0.750	0.750	1.125	2.937	0.937	2.000	2.375
EXBB 1.00	1.000	1.5000	3.437	1.218	2.312	2.687
EXBB 1.25-S	1.2500	1.7500	3.937	1.218	2.656	3.000
EXBB 1.250	1.2500	1.7500	3.937	1.687	2.656	3.000
EXBB 1.500	1.5000	2.000	4.187	1.875	2.968	3.437

Product Code	A	B	C	L
EXP0.75 X 5.5	0.750	0.7355	1.250	5.5
EXP1 X 6	1.000	0.9855	1.500	6
EXP1 X 6.5	1.000	0.9855	1.500	6.5
EXP1 X 7.5	1.000	0.9855	1.500	7.5
EXP1.25 X 6	1.250	1.2355	2.000	6
EXP1.25 X 6.5	1.250	1.2355	2.000	6.5
EXP1.25 X 7.5	1.250	1.2355	2.000	7.5
EXP1.25 X 8.5	1.250	1.2355	2.000	8.5
EXP1.50 X 7.5	1.500	1.4855	2.000	7.5
EXP1.50 X 8.5	1.500	1.4855	2.000	8.5
EXP1.50 X 9.5	1.500	1.4855	2.000	9.5