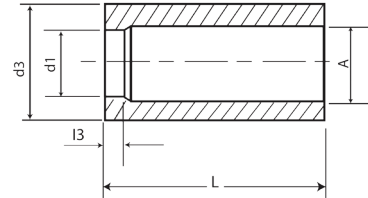




Tolerance
d1 = H8
d3 = n6



Material: (HSS) M2 Tungsten High Speed Steel
Shank Hardness: 64 +/- 2 Hrc.
Head Hardness: 50 +/- 5 Hrc.

Material: (A2) 12% Chromium Tool Steel
Shank Hardness: 62 +/- 2 Hrc.
Head Hardness: 45 +/- 5 Hrc.

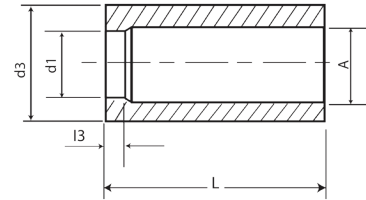
DIA d1	DIA d3	A	l3	HSS	
				20	28
1.00	6	2.5	2	DIA-0100-20-M2	DIA-0100-28-M2
1.05	6	2.5	2	DIA-0105-20-M2	
1.10	6	2.5	2	DIA-0110-20-M2	DIA-0110-28-M2
1.20	6	2.5	2	DIA-0120-20-M2	DIA-0120-28-M2
1.30	6	2.5	2	DIA-0130-20-M2	DIA-0130-28-M2
1.40	6	2.5	2	DIA-0140-20-M2	DIA-0140-28-M2
1.50	6	2.5	2	DIA-0150-20-M2	DIA-0150-28-M2
1.60	6	2.5	2	DIA-0160-20-M2	DIA-0160-28-M2
1.70	6	2.5	2	DIA-0170-20-M2	DIA-0170-28-M2
1.75	6	2.5	2	DIA-0175-20-M2	DIA-0175-28-M2
1.80	6	2.5	2	DIA-0180-20-M2	DIA-0180-28-M2
1.90	6	2.5	2	DIA-0190-20-M2	DIA-0190-28-M2
2.00	6	2.5	2	DIA-0200-20-M2	DIA-0200-28-M2
2.10	7	3.5	3	DIA-0210-20-M2	DIA-0210-28-M2
2.20	7	3.5	3	DIA-0220-20-M2	DIA-0220-28-M2
2.25	7	3.5	3	DIA-0225-20-M2	DIA-0225-28-M2
2.30	7	3.5	3	DIA-0230-20-M2	DIA-0230-28-M2
2.40	7	3.5	3	DIA-0240-20-M2	DIA-0240-28-M2
2.50	7	3.5	3	DIA-0250-20-M2	DIA-0250-28-M2
2.60	7	3.5	3	DIA-0260-20-M2	DIA-0260-28-M2
2.70	7	3.5	3	DIA-0270-20-M2	DIA-0270-28-M2
2.75	7	3.5	3	DIA-0275-20-M2	DIA-0275-28-M2
2.80	7	3.5	3	DIA-0280-20-M2	DIA-0280-28-M2
2.90	7	3.5	3	DIA-0290-20-M2	DIA-0290-28-M2
3.00	7	3.5	3	DIA-0300-20-M2	DIA-0300-28-M2
3.05	7	3.5	3	DIA-0305-20-M2	DIA-0305-28-M2
3.10	8	4.5	4	DIA-0310-20-M2	DIA-0310-28-M2
3.20	8	4.5	4	DIA-0320-20-M2	DIA-0320-28-M2
3.25	8	4.5	4	DIA-0325-20-M2	
3.30	8	4.5	4	DIA-0330-20-M2	DIA-0330-28-M2
3.40	8	4.5	4	DIA-0340-20-M2	DIA-0340-28-M2
3.50	8	4.5	4	DIA-0350-20-M2	DIA-0350-28-M2
3.60	8	4.5	4	DIA-0360-20-M2	DIA-0360-28-M2
3.70	8	4.5	4	DIA-0370-20-M2	DIA-0370-28-M2
3.75	8	4.5	4	DIA-0375-20-M2	DIA-0375-28-M2
3.80	8	4.5	4	DIA-0380-20-M2	DIA-0380-28-M2
3.90	8	4.5	4	DIA-0390-20-M2	DIA-0390-28-M2
4.00	8	4.5	4	DIA-0400-20-M2	DIA-0400-28-M2
4.10	10	5.5	4	DIA-0410-20-M2	DIA-0410-28-M2
4.20	10	5.5	4	DIA-0420-20-M2	DIA-0420-28-M2
4.25	10	5.5	4	DIA-0425-20-M2	
4.30	10	5.5	4	DIA-0430-20-M2	DIA-0430-28-M2
4.40	10	5.5	4	DIA-0440-20-M2	DIA-0440-28-M2
4.50	10	5.5	4	DIA-0450-20-M2	DIA-0450-28-M2
4.60	10	5.5	4	DIA-0460-20-M2	DIA-0460-28-M2
4.70	10	5.5	4	DIA-0470-20-M2	DIA-0470-28-M2
4.75	10	5.5	4	DIA-0475-20-M2	
4.80	10	5.5	4	DIA-0480-20-M2	DIA-0480-28-M2
4.90	10	5.5	4	DIA-0490-20-M2	DIA-0490-28-M2
5.00	12	6.5	4	DIA-0500-20-M2	DIA-0500-28-M2

DIA d1	DIA d3	A	l3	A2
				28
1.00	6	2.5	2	DIA-0100-28-A2
1.05	6	2.5	2	DIA-0105-28-A2
1.10	6	2.5	2	DIA-0110-28-A2
1.20	6	2.5	2	DIA-0110-28-A2
1.30	6	2.5	2	DIA-0120-28-A2
1.40	6	2.5	2	DIA-0130-28-A2
1.50	6	2.5	2	DIA-0140-28-A2
1.60	6	2.5	2	DIA-0150-28-A2
1.70	6	2.5	2	DIA-0160-28-A2
1.75	6	2.5	2	DIA-0170-28-A2
1.80	6	2.5	2	DIA-0175-28-A2
1.90	7	2.5	2	DIA-0180-28-A2
2.00	7	2.5	2	DIA-0200-28-A2
2.10	7	3.5	3	DIA-0210-28-A2
2.20	7	3.5	3	DIA-0220-28-A2
2.25	7	3.5	3	DIA-0225-28-A2
2.30	7	3.5	3	DIA-0230-28-A2
2.40	7	3.5	3	DIA-0240-28-A2
2.50	7	3.5	3	DIA-0250-28-A2
2.60	7	3.5	3	DIA-0260-28-A2
2.70	7	3.5	3	DIA-0270-28-A2
2.75	7	3.5	3	DIA-0275-28-A2
2.80	7	3.5	3	DIA-0280-28-A2
2.90	7	3.5	3	DIA-0290-28-A2
3.00	7	3.5	3	DIA-0300-28-A2
3.05	7	3.5	3	DIA-0305-28-A2
3.10	7	3.5	3	DIA-0310-28-A2
3.20	7	3.5	3	DIA-0320-28-A2
3.25	7	3.5	3	DIA-0325-28-A2
3.30	7	3.5	3	DIA-0330-28-A2
3.40	8	4.5	4	DIA-0340-28-M2
3.50	8	4.5	4	DIA-0350-28-M2
3.60	8	4.5	4	DIA-0360-28-M2
3.70	8	4.5	4	DIA-0370-28-M2
3.75	8	4.5	4	DIA-0375-28-M2
3.80	8	4.5	4	DIA-0380-28-M2
3.90	8	4.5	4	DIA-0390-28-M2
4.00	8	4.5	4	DIA-0400-28-A2
4.10	10	5.5	4	DIA-0410-28-A2
4.20	10	5.5	4	DIA-0420-28-A2
4.30	10	5.5	4	DIA-0430-28-A2
4.40	10	5.5	4	DIA-0440-28-A2
4.50	10	5.5	4	DIA-0450-28-A2
4.60	10	5.5	4	DIA-0460-28-A2
4.70	10	5.5	4	DIA-0470-28-A2
4.75	10	5.5	4	DIA-0475-20-A2
4.80	10	5.5	4	DIA-0480-28-A2
4.90	10	5.5	4	DIA-0490-28-A2
5.00	12	6.5	4	DIA-0500-28-A2

Continued next page



Tolerance
d1 = H8
d3 = n6



Material: (HSS) M2 Tungsten High Speed Steel
Shank Hardness: 64 +/- 2 Hrc.
Head Hardness: 50 +/- 5 Hrc.

Material: (A2) 12% Chromium Tool Steel
Shank Hardness: 62 +/- 2 Hrc.
Head Hardness: 45 +/- 5 Hrc.

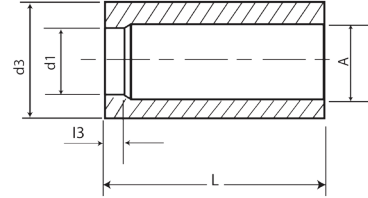
DIA d1	DIA d3	A	l3	HSS	
				20	28
5.10	12	6.5	4	DIA-0510-20-M2	DIA-0510-28-M2
5.20	12	6.5	4	DIA-0520-20-M2	DIA-0520-28-M2
5.25	12	6.5	4	DIA-0525-20-M2	
5.30	12	6.5	4	DIA-0530-20-M2	DIA-0530-28-M2
5.40	12	6.5	4	DIA-0540-20-M2	DIA-0540-28-M2
5.50	12	6.5	4	DIA-0550-20-M2	DIA-0550-28-M2
5.60	12	6.5	4	DIA-0560-20-M2	DIA-0560-28-M2
5.70	12	6.5	4	DIA-0570-20-M2	DIA-0570-28-M2
5.75	12	6.5	4	DIA-0575-20-M2	
5.80	12	6.5	4	DIA-0580-20-M2	DIA-0580-28-M2
5.90	12	6.5	4	DIA-0590-20-M2	DIA-0590-28-M2
6.00	12	6.5	4	DIA-0600-20-M2	DIA-0600-28-M2
6.10	15	7.5	4	DIA-0610-20-M2	DIA-0610-28-M2
6.20	15	7.5	4	DIA-0620-20-M2	DIA-0620-28-M2
6.25	15	7.5	4	DIA-0625-20-M2	
6.30	15	7.5	4	DIA-0630-20-M2	DIA-0630-28-M2
6.40	15	7.5	4	DIA-0640-20-M2	DIA-0640-28-M2
6.50	15	7.5	4	DIA-0650-20-M2	DIA-0650-28-M2
6.60	15	7.5	4	DIA-0660-20-M2	DIA-0660-28-M2
6.70	15	7.5	4	DIA-0670-20-M2	DIA-0670-28-M2
6.75	15	7.5	4	DIA-0675-20-M2	
6.80	15	7.5	4	DIA-0680-20-M2	DIA-0680-28-M2
6.90	15	7.5	4	DIA-0690-20-M2	DIA-0690-28-M2
7.00	15	7.5	4	DIA-0700-20-M2	DIA-0700-28-M2
7.10	15	7.5	4	DIA-0710-20-M2	DIA-0710-28-M2
7.20	15	7.5	4	DIA-0720-20-M2	DIA-0720-28-M2
7.25	15	7.5	4	DIA-0725-20-M2	
7.30	15	7.5	4	DIA-0730-20-M2	DIA-0730-28-M2
7.40	15	7.5	4	DIA-0740-20-M2	DIA-0740-28-M2
7.50	15	7.5	4	DIA-0750-20-M2	DIA-0750-28-M2
7.60	15	7.5	4	DIA-0760-20-M2	DIA-0760-28-M2
7.70	15	7.5	4	DIA-0770-20-M2	DIA-0770-28-M2
7.75	15	7.5	4	DIA-0775-20-M2	
7.80	15	7.5	4	DIA-0780-20-M2	DIA-0780-28-M2
7.90	15	7.5	4	DIA-0790-20-M2	DIA-0790-28-M2
8.00	15	7.5	4	DIA-0800-20-M2	DIA-0800-28-M2
8.10	18	9.5	4	DIA-0810-20-M2	DIA-0810-28-M2
8.20	18	9.5	4	DIA-0820-20-M2	DIA-0820-28-M2
8.25	18	9.5	4	DIA-0825-20-M2	
8.30	18	9.5	4	DIA-0830-20-M2	DIA-0830-28-M2
8.40	18	9.5	4	DIA-0840-20-M2	DIA-0840-28-M2
8.50	18	9.5	4	DIA-0850-20-M2	DIA-0850-28-M2
8.60	18	9.5	4	DIA-0860-20-M2	DIA-0860-28-M2
8.70	18	9.5	4	DIA-0870-20-M2	DIA-0870-28-M2
8.75	18	9.5	4	DIA-0875-20-M2	
8.80	18	9.5	4	DIA-0880-20-M2	DIA-0880-28-M2
8.90	18	9.5	4	DIA-0890-20-M2	DIA-0890-28-M2
9.00	18	9.5	4	DIA-0900-20-M2	DIA-0900-28-M2
9.10	18	9.5	4	DIA-0910-20-M2	DIA-0910-28-M2
9.20	18	9.5	4	DIA-0920-20-M2	DIA-0920-28-M2

DIA d1	DIA d3	A	l3	A2	
				20	28
5.10	12	6.5	4		DIA-0510-28-A2
5.20	12	6.5	4		DIA-0520-28-A2
5.25	12	6.5	4		DIA-0525-20-A2
5.30	12	6.5	4		DIA-0530-28-A2
5.40	12	6.5	4		DIA-0540-28-A2
5.50	12	6.5	4		DIA-0550-28-A2
5.60	12	6.5	4		DIA-0560-28-A2
5.70	12	6.5	4		DIA-0570-28-A2
5.75	12	6.5	4		DIA-0575-28-A2
5.80	12	6.5	4		DIA-0580-28-A2
5.90	12	6.5	4		DIA-0590-28-A2
6.00	12	6.5	4		DIA-0600-28-A2
6.10	15	7.5	4		DIA-0610-28-A2
6.20	15	7.5	4		DIA-0620-28-A2
6.30	15	7.5	4		DIA-0630-28-A2
6.40	15	7.5	4		DIA-0640-28-A2
6.50	15	7.5	4		DIA-0650-28-A2
6.60	15	7.5	4		DIA-0660-28-A2
6.70	15	7.5	4		DIA-0670-28-A2
6.80	15	7.5	4		DIA-0690-28-M2
6.90	15	7.5	4		DIA-0690-28-M2
7.00	15	7.5	4		DIA-0700-28-A2
7.10	15	7.5	4		DIA-0710-28-A2
7.20	15	7.5	4		DIA-0720-28-A2
7.30	15	7.5	4		DIA-0730-28-A2
7.40	15	7.5	4		DIA-0740-28-A2
7.50	15	7.5	4		DIA-0750-28-A2
7.60	15	7.5	4		DIA-0760-28-A2
7.70	15	7.5	4		DIA-0770-28A2
7.80	15	7.5	4		DIA-0790-28-A2
7.90	15	7.5	4		DIA-0790-28-A2
8.00	15	7.5	4		DIA-0800-28-A2
8.10	18	9.5	4		DIA-0810-28-A2
8.20	18	9.5	4		DIA-0820-28-A2
8.30	18	9.5	4		DIA-0830-28-A2
8.40	18	9.5	4		DIA-0840-28-A2
8.50	18	9.5	4		DIA-0850-28-A2
8.60	18	9.5	4		DIA-0860-28-A2
8.70	18	9.5	4		DIA-0870-28-A2
8.80	18	9.5	4		DIA-0880-28-A2
8.90	18	9.5	4		DIA-0890-28-A2
9.00	18	9.5	4		DIA-0900-28-A2
9.10	18	9.5	4		DIA-0910-28-A2
9.20	18	9.5	4		DIA-0920-28-A2

Continued next page



Tolerance
d1 = H8
d3 = n6



Material: (HSS) M2 Tungsten High Speed Steel
Shank Hardness: 64 +/- 2 Hrc.
Head Hardness: 50 +/- 5 Hrc.

Material: (A2) 12% Chromium Tool Steel
Shank Hardness: 62 +/- 2 Hrc.
Head Hardness: 45 +/- 5 Hrc.

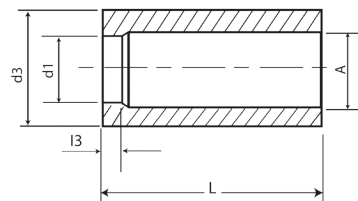
DIA d1	DIA d3	A	I3	HSS	
				20	28
9.25	18	9.5	4	DIA-0925-20-M2	
9.30	18	9.5	4	DIA-0930-20-M2	DIA-0930-28-M2
9.40	18	9.5	4	DIA-0940-20-M2	DIA-0940-28-M2
9.50	18	9.5	4	DIA-0950-20-M2	DIA-0950-28-M2
9.60	18	9.5	4	DIA-0960-20-M2	DIA-0960-28-M2
9.70	18	9.5	4	DIA-0970-20-M2	DIA-0970-28-M2
9.75	18	9.5	4	DIA-0975-20-M2	
9.80	18	9.5	4	DIA-0980-20-M2	DIA-0980-28-M2
9.90	18	9.5	4	DIA-0990-20-M2	DIA-0990-28-M2
10.00	18	9.5	4	DIA-1000-20-M2	DIA-1000-28-M2
10.10	22	12	4	DIA-1010-20-M2	DIA-1010-28-M2
10.20	22	12	4	DIA-1020-20-M2	DIA-1020-28-M2
10.25	22	12	4		DIA-1025-28-M2
10.30	22	12	4	DIA-1030-20-M2	DIA-1030-28-M2
10.40	22	12	4	DIA-1040-20-M2	DIA-1040-28-M2
10.50	22	12	4	DIA-1050-20-M2	DIA-1050-28-M2
10.60	22	12	4	DIA-1060-20-M2	DIA-1060-28-M2
10.70	22	12	4	DIA-1070-20-M2	DIA-1070-28-M2
10.80	22	12	4	DIA-1080-20-M2	DIA-1080-28-M2
10.90	22	12	4	DIA-1090-20-M2	DIA-1090-28-M2
11.00	22	12	4	DIA-1100-20-M2	DIA-1100-28-M2
11.10	22	12	4	DIA-1110-20-M2	DIA-1110-28-M2
11.20	22	12	4	DIA-1120-20-M2	DIA-1120-28-M2
11.30	22	12	4	DIA-1130-20-M2	DIA-1130-28-M2
11.40	22	12	4	DIA-1140-20-M2	DIA-1140-28-M2
11.50	22	12	4	DIA-1150-20-M2	DIA-1150-28-M2
11.60	22	12	4	DIA-1160-20-M2	DIA-1160-28-M2
11.70	22	12	4	DIA-1170-20-M2	DIA-1170-28-M2
11.80	22	12	4	DIA-1180-20-M2	DIA-1180-28-M2
11.90	22	12	4	DIA-1190-20-M2	DIA-1190-28-M2
12.00	22	12	4	DIA-1200-20-M2	DIA-1200-28-M2
12.10	26	14	4	DIA-1210-20-M2	DIA-1210-28-M2
12.20	26	14	4	DIA-1220-20-M2	DIA-1220-28-M2
12.30	26	14	4	DIA-1230-20-M2	DIA-1230-28-M2
12.40	26	14	4	DIA-1240-20-M2	DIA-1240-28-M2
12.50	26	14	4	DIA-1250-20-M2	DIA-1250-28-M2
12.60	26	14	4	DIA-1260-20-M2	DIA-1260-28-M2
12.70	26	14	4	DIA-1270-20-M2	DIA-1270-28-M2
12.80	26	14	4	DIA-1280-20-M2	DIA-1280-28-M2
12.90	26	14	4	DIA-1290-20-M2	DIA-1290-28-M2
13.00	26	14	4	DIA-1300-20-M2	DIA-1300-28-M2
13.10	26	14	4	DIA-1310-20-M2	DIA-1310-28-M2
13.20	26	14	4	DIA-1320-20-M2	DIA-1320-28-M2
13.30	26	14	4	DIA-1330-20-M2	DIA-1330-28-M2
13.40	26	14	4	DIA-1340-20-M2	DIA-1340-28-M2
13.50	26	14	4	DIA-1350-20-M2	DIA-1350-28-M2
13.60	26	14	4	DIA-1360-20-M2	DIA-1360-28-M2
13.70	26	14	4	DIA-1370-20-M2	DIA-1370-28-M2
13.80	26	14	4	DIA-1380-20-M2	DIA-1380-28-M2
13.90	26	14	4	DIA-1390-20-M2	DIA-1390-28-M2

DIA d1	DIA d3	A	I3	A2
				28
9.30	18	9.5	4	DIA-0930-28-A2
9.40	18	9.5	4	DIA-0940-28-A2
9.50	18	9.5	4	DIA-0950-28-A2
9.60	18	9.5	4	DIA-0960-28-A2
9.70	18	9.5	4	DIA-0970-28-A2
9.80	18	9.5	4	DIA-0980-28-A2
9.90	18	9.5	4	DIA-0990-28-A2
10.00	18	9.5	4	DIA-1000-28-A2
10.10	22	12	4	DIA-1010-28-A2
10.20	22	12	4	DIA-1020-28-A2
10.30	22	12	4	DIA-1030-28-A2
10.40	22	12	4	DIA-1040-28-A2
10.50	22	12	4	DIA-1050-28-A2
10.60	22	12	4	DIA-1060-28-A2
10.70	22	12	4	DIA-1070-28-A2
10.80	22	12	4	DIA-1080-28-A2
10.90	22	12	4	DIA-1090-28-A2
11.00	22	12	4	DIA-1100-28-A2
11.10	22	12	4	DIA-1110-28-A2
11.20	22	12	4	DIA-1120-28-A2
11.30	22	12	4	DIA-1130-28-A2
11.40	22	12	4	DIA-1140-28-A2
11.50	22	12	4	DIA-1150-28-A2
11.60	22	12	4	DIA-1160-28-A2
11.70	22	12	4	DIA-1170-28-A2
11.80	22	12	4	DIA-1180-28-A2
11.90	22	12	4	DIA-1190-28-A2
12.00	22	12	4	DIA-1200-28-A2
12.10	26	14	4	DIA-1210-28-A2
12.20	26	14	4	DIA-1220-28-A2
12.30	26	14	4	DIA-1230-28-A2
12.40	26	14	4	DIA-1240-28-A2
12.50	26	14	4	DIA-1250-28-A2
12.60	26	14	4	DIA-1260-28-A2
12.70	26	14	4	DIA-1270-28-A2
12.80	26	14	4	DIA-1280-28-A2
12.90	26	14	4	DIA-1290-28-A2
13.00	26	14	4	DIA-1300-28-A2
13.10	26	14	4	DIA-1310-28-A2
13.20	26	14	4	DIA-1320-28-A2
13.30	26	14	4	DIA-1330-28-A2
13.40	26	14	4	DIA-1340-28-A2
13.50	26	14	4	DIA-1350-28-A2
13.60	26	14	4	DIA-1360-28-A2
13.70	26	14	4	DIA-1370-28-A2
13.80	26	14	4	DIA-1380-28-A2
13.90	26	14	4	DIA-1390-28-A2

Continued next page



Tolerance
d1 = H8
d3 = n6



Material: (HSS) M2 Tungsten High Speed Steel
Shank Hardness: 64 +/- 2 Hrc.
Head Hardness: 50 +/- 5 Hrc.

Material: (A2) 12% Chromium Tool Steel
Shank Hardness: 62 +/- 2 Hrc.
Head Hardness: 45 +/- 5 Hrc.

DIA d1	DIA d3	A	l3	HSS	
				20	28
14.00	26	14	4	DIA-1400-20-M2	DIA-1400-28-M2
14.10	26	16	4	DIA-1410-20-M2	DIA-1410-28-M2
14.20	26	16	4	DIA-1420-20-M2	DIA-1420-28-M2
14.30	26	16	4	DIA-1430-20-M2	DIA-1430-28-M2
14.40	26	16	4	DIA-1440-20-M2	DIA-1440-28-M2
14.50	26	16	4	DIA-1450-20-M2	DIA-1450-28-M2
14.60	26	16	4	DIA-1460-20-M2	DIA-1460-28-M2
14.70	26	16	4	DIA-1470-20-M2	DIA-1470-28-M2
14.80	26	16	4	DIA-1480-20-M2	DIA-1480-28-M2
14.90	26	16	4	DIA-1490-20-M2	DIA-1490-28-M2
15.00	26	16	4	DIA-1500-20-M2	DIA-1500-28-M2
16.10	26	16	4		DIA-1610-28-M2

DIA d1	DIA d3	A	l3	A2
				28
14.00	26	14	4	DIA-1400-28-A2
14.10	26	16	4	DIA-1410-28-A2
14.20	26	16	4	DIA-1420-28-A2
14.30	26	16	4	DIA-1430-28-A2
14.40	26	16	4	DIA-1440-28-A2
14.50	26	16	4	DIA-1450-28-A2
14.60	26	16	4	DIA-1460-28-A2
14.70	26	16	4	DIA-1470-28-A2
14.80	26	16	4	DIA-1480-28-A2
14.90	26	16	4	DIA-1490-28-A2
15.00	26	16	4	DIA-1500-28-A2
16.10	26	16	4	