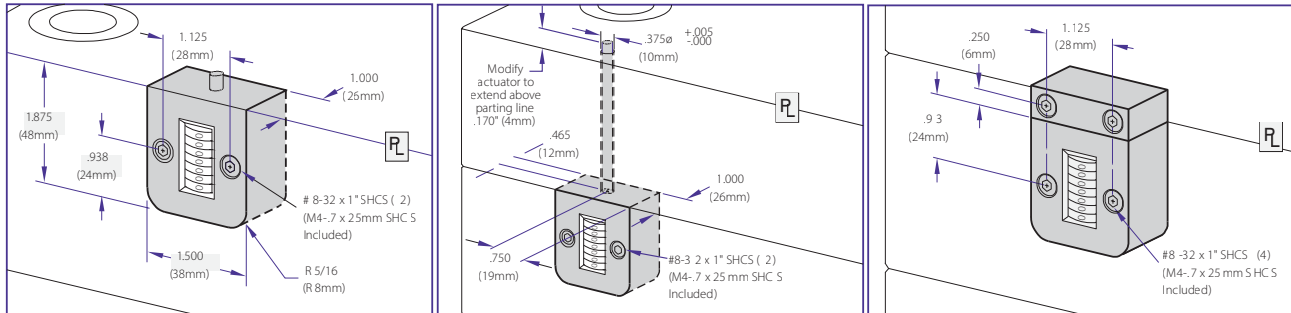


Movable Half / B Side

Stationary Half / A Side



The CounterView positively monitors mould activity, validates process monitoring data, and assists mould maintenance procedures

- Maximum operating temperatures:– 250 °F (120 °C) Standard CounterView
- Counter: Non-resettable mechanical, 7-digit
- Available for installation on the movable or stationary halves and with extensions
- Heat protection insulators available on request
- Cover Plates for protection are sold separately.

Product Code	Description
CVPL-B	Standard: Parting Line
CVIN-B	Standard: Internal Extension
CVPL-A	Standard: Parting Line
CVIN-A	Standard: Internal Extension
CVE-EXT	External Mounting Block including #8-32 x 1" (2) and M4 x 25mm screws (2)