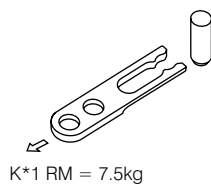
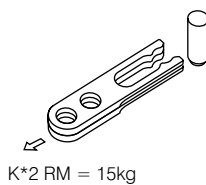


Mat.: 1.8159  
Hardened  $58 \pm 2$  HRC.  
Patented System

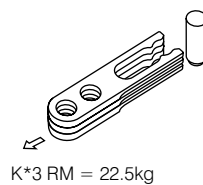
No pocket machining required as needed with other similar products on the market. Minimum space required for installation. Reduces costs compared to conventional mechanisms. Offers a standard solution to the moulder.



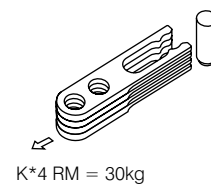
K\*1 RM = 7.5kg



K\*2 RM = 15kg

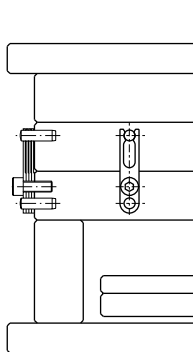


K\*3 RM = 22.5kg

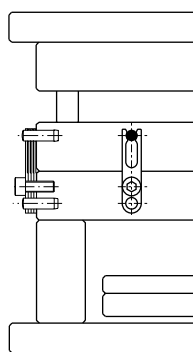


K\*4 RM = 30kg

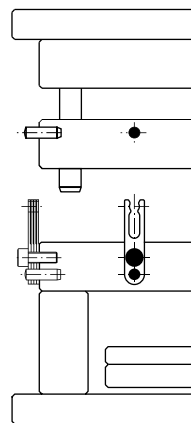
**IMPORTANT**  
K = Approximate resistance value that can be obtained by grouping clips



Closed Mould



1st Opening



2nd Opening

Product Code	K
RM.651608	7.5 Kg.