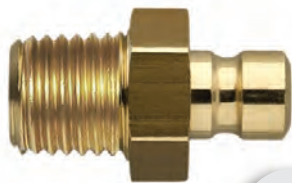




hales[®]



**2025
MOULDING SUPPLIES**



MOULD COOLING

■	Brass Couplings, Sockets	127
■	Air Fittings	138
■	Baffles	140
■	Heat Transfer Rods	141
■	Cascade Assemblies	141
■	Hose Crimper & Ferrules	142
■	Polyurethane Hose	144
■	Push Fittings	145
■	Air Guns	147
■	Ball Valves	147
■	Manifolds	148
■	Water Flow Regulators	151

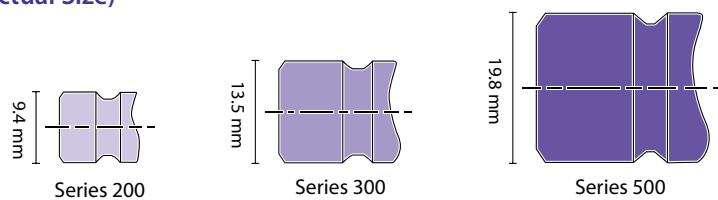
TEMPERATURE CONTROL & PLUGS

■	Temperature Controllers	155
■	Mainframe	156
■	RMA Modular Controllers	157
■	Mould Junction Box	158
■	Module Fuses	158
■	Connector Crimps	159
■	Blank Panel	159
■	Universal Floor Stand	159
■	Power Cables & Electrical Connectors	160
■	Band, Micro Coil & Custom Heaters	169
■	Insulation Barrel Blankets	172
■	Thermocouples	173

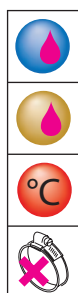
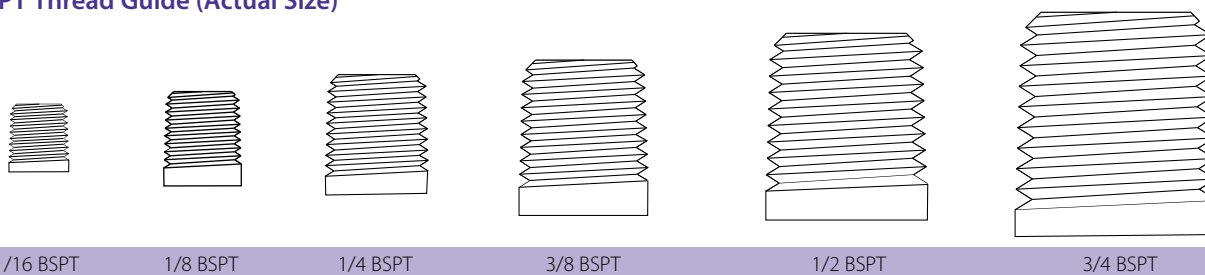
MOULDERS PRODUCTION ACCESSORIES

■	De-Duster	174
■	Magic Catch	175
■	Temperature Control Units	176
■	De-scaling Pump Kit	177
■	Counter View Monitors	178
■	Clamps, Nuts & Bolts	180
■	Hopper Magnets	181
■	Mould Curtains	181
■	Bernzomatic -Torch Kit & Accessories	182
■	Moulder's Specialty Sprays, Protectors & Releases	182
■	Pressure Test Kit	182
■	Moulder's Specialty Lubricants & Polishes	183
■	Copper Anti-Seize	185
■	Purging Compounds	186
■	Oil Absorbant Clay & Sheets	186
■	Mould Wipes	186
■	Heat Transfer & Anti-Seize Compound	187
■	Nano Plas Mould Coating	187
■	Zap-Ox Cleaner	187
■	Sprue Reamers	187
■	Thor Hammers	188
■	Bronze Tools	188
■	Sprue Snips	189
■	Work Finishers	190
■	Knock Out Bar Set	190
■	Pry Bar	190
■	Leather Gloves	190
■	Limit Switches	191
■	Deburring Tools	192

200, 300 & 500 Series (Actual Size)



BSPT Thread Guide (Actual Size)

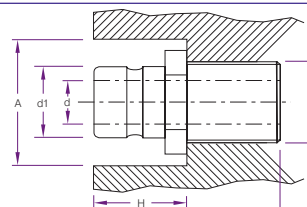


Water

Oil

Temperature max.

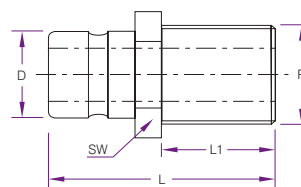
Only in combination with Push-Lock hose and Push-Lock hosetail



Product Code	Series	R (BSPT)	D1	H	A	L
CM251	200 Series	1/8	9.4	17	22	25
CM252		1/4	9.4	19	26	29
CM253		3/8	9.4	19	30	30
CM351	300 Series	1/8	13.5	25	26	35
CM352*		1/4	13.5	25	26	35
CM353*		3/8	13.5	26	30	38
CM354	500 Series	1/2	13.5	28	37	42
CM552		1/4	19.8	37	30	41
CM553		3/8	19.8	37	32	41
CM554		1/2	19.8	38	32	39
CM556		3/4	19.8	38	38	45

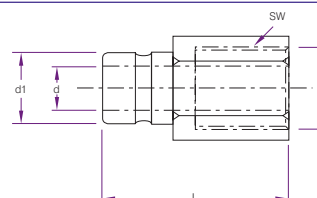
*Also available with internal valve, specify "V".

Plug - Male with Teflon

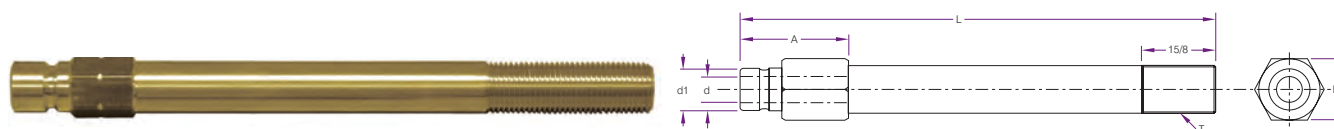


Product Code	Series	R (BSPT)	D	L	L1	SW
CMT251	200 Series	1/8	9.4	24	9	13
CMT252		1/4	9.4	29	12	16
CMT253		3/8	9.4	30	12	19
CMT352	300 Series	1/4	13.5	34	12	16
CMT353		3/8	13.5	34	12	19
CMT354		1/2	13.5	39	17	24
CMT554	500 Series	1/2	19.8	44	17	22
CMT556		3/4	19.8	45	19	29

Plug - Female



Product Code	Series	R (BSPT)	d	d1	L	SW
CM251F	200 Series	1/8	6	9.4	28	13
CM252F		1/4	6	9.4	32	17
CM253F		3/8	6	9.4	34	19
CM352F	300 Series	1/4	9	13.5	37	17
CM353F		3/8	9	13.5	39	19
CM354F		1/2	9	13.5	46	24



200 Series 1/4 Flow

Product Code	L	T (BSPT)	d	d1	A
CM251212	2 1/2	1/8	6	9.4	11/16
CM2514	4	1/8	6	9.4	1
CM251512	5 1/2	1/8	6	9.4	1
CM2517	7	1/8	6	9.4	1
CM251812	8 1/2	1/8	6	9.4	1
CM252212	2 1/2	1/4	6	9.4	7/8
CM2524	4	1/4	6	9.4	1 1/4
CM252512	5 1/2	1/4	6	9.4	1 1/4
CM2527	7	1/4	6	9.4	1 1/4
CM252812	8 1/2	1/4	6	9.4	1 1/4
CM253212	2 1/2	3/8	6	9.4	1
CM2534	4	3/8	6	9.4	1 1/4
CM253512	5 1/2	3/8	6	9.4	1 1/4
CM2537	7	3/8	6	9.4	1 1/4

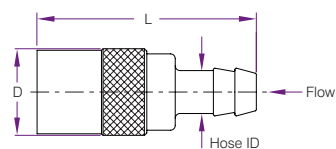
300 Series 3/8 Flow

Product Code	L	T (BSPT)	d	d1	A
CM351212	2 1/2	1/8	9.4	13.5	7/8
CM3514	4	1/8	9.4	13.5	1
CM351512	5 1/2	1/8	9.4	13.5	1
CM3517	7	1/8	9.4	13.5	1
CM351812	8 1/2	1/8	9.4	13.5	1
CM352212	2 1/2	1/4	9.4	13.5	7/8
CM3524	4	1/4	9.4	13.5	1 1/4
CM352512	5 1/2	1/4	9.4	13.5	1 1/4
CM3527	7	1/4	9.4	13.5	1 1/4
CM352812	8 1/2	1/4	9.4	13.5	1 1/4
CM35210	10	1/4	9.4	13.5	1 1/4
CM3534	4	3/8	9.4	13.5	1
CM353512	5 1/2	3/8	9.4	13.5	1 1/4
CM3537	7	3/8	9.4	13.5	1 1/4
CM35310	10	3/8	9.4	13.5	1 1/4

Seal

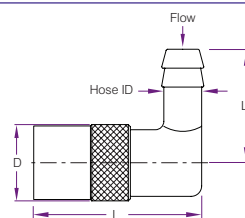


Product Code	Description
CM200	200 Series Viton
CM300-G	300 Series Viton
CM300-R	300 Series Silicone
CM500	500 Series Silicone



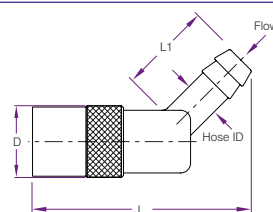
Product Code	Product Code without Valve	Hose with Valve	Flow	L	D	Series
CM206	CM206V	3/8	1/4	51mm	17	200
CM306	CM306V	3/8	1/4	64mm	23	300
CM308	CM308V	1/2	3/8	66.5mm	23	300
CM308SL	CM308VSL	1/2	3/8	73mm	23	300
CM506	CM506V	3/4	5/8	89mm	30	500

Coupling - 90° Male

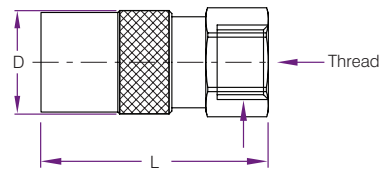


Product Code without Valve	Product Code with Valve	Hose ID	Flow	L	L1	D	Series
CM216	CM216V	3/8	1/4	40mm	22mm	17	200
CM316	CM316V	3/8	1/4	56mm	28.5mm	23	300
CM318	CM318V	1/2	3/8	56mm	28.5mm	23	300
CM516	CM516V	3/4	5/8	77mm	32mm	30	500

Coupling - 45° Male

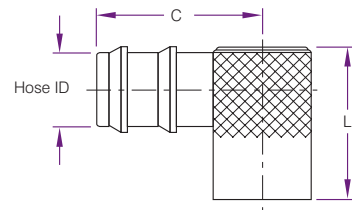
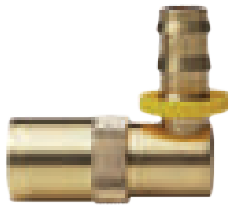


Product Code without Valve	Product Code with Valve	Hose ID	Flow	L	L1	D	Series
CM226	CM226V	3/8	1/4	55.5mm	22mm	18	200
-	CM326V	3/8	1/4	75mm	25mm	24	300
CM328	CM328V	1/2	3/8	75mm	25mm	24	300
CM526	CM526V	3/4	5/8	77mm	30mm	32	500



Product Code without Valve	Product Code with Valve	Thread	L	D	Series
CMB200		1/8	40	18	200
CMB300	CMB300V	1/4	47	23	300
CMB500		1/2	52	30	500

Coupling - 90° Push Lock



Product Code without Valve	Hose ID	Flow	L	D	Series
WJ200-6	3/8	1	1 1/4	3/8	5/8
WJ300-6	3/8	1 7/16	1 9/16	1/2	7/8
WJ300-8	1/2	1 7/16	1 9/16	1/2	7/8

Joiner - Hose to Hose



Product Code	Description
TFP7-316	3/16 Hose to Hose Joiner
TFP7-14	1/4 Hose to Hose Joiner
TFP7-516	5/16 Hose to Hose Joiner
TFP7-38	3/8 Hose to Hose Joiner
TFP7-12	1/2 Hose to Hose Joiner
TFP7-34	3/4 Hose to Hose Joiner



Product Code	Description
TFP3-31618	3/16 Hose Tail x 1/8 Male BSP
TFP3-31614	3/16 Hose Tail x 1/4 Male BSP
TFP3-1418	1/4 Hose Tail x 1/8 Male BSP
TFP3-1414	1/4 Hose Tail x 1/4 Male BSP
TFP3-1438	1/4 Hose Tail x 3/8 Male BSP
TFP3-1412	1/4 Hose Tail x 1/2 Male BSP
TFP3-51618	5/16 Hose Tail x 1/8 Male BSP
TFP3-51614	5/16 Hose Tail x 1/4 Male BSP
TFP3-51638	5/16 Hose Tail x 3/8 Male BSP
TFP3-51612	5/16 Hose Tail x 1/2 Male BSP
TFP3-3818	3/8 Hose Tail x 1/8 Male BSP
TFP3-3814	3/8 Hose Tail x 1/4 Male BSP
TFP3-3838	3/8 Hose Tail x 3/8 Male BSP
TFP3-3812	3/8 Hose Tail x 1/2 Male BSP
TFP3-3834	3/8 Hose Tail x 3/4 Male BSP
TFP3-1218	1/2 Hose Tail x 1/8 Male BSP
TFP3-1214	1/2 Hose Tail x 1/4 Male BSP
TFP3-1238	1/2 Hose Tail x 3/8 Male BSP
TFP3-1212	1/2 Hose Tail x 1/2 Male BSP
TFP3-1234	1/2 Hose Tail x 3/4 Male BSP
TFP3-3438	3/4 Hose Tail x 3/8 Male BSP
TFP3-3412	3/4 Hose Tail x 1/2 Male BSP
TFP3-3410	3/4 Hose Tail x 1" Male BSP
TFP3-1034	1" Hose Tail x 3/4 Male BSP
TFP3-1010	1" Hose Tail x 1" Male BSP

Hose Tail to Female BSP



Product Code	Description
TFP10-3814	3/8 Tail 1/4 Female BSP
TFP10-1214	1/2 Tail 1/4 Female BSP
TFP10-1238	1/2 Tail 3/8 Female BSP
TFP10-1212	1/2 Tail 1/2 Female BSP

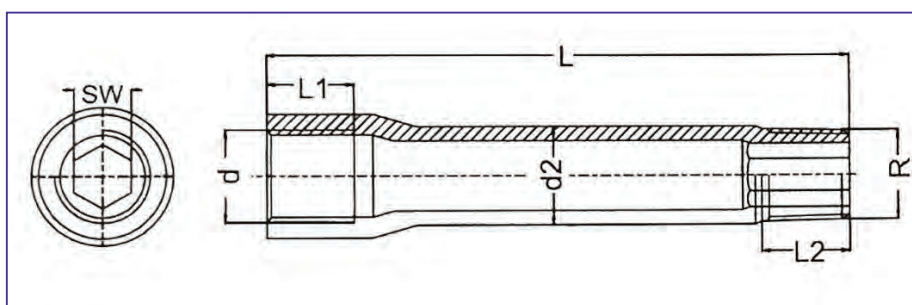


Product Code	Description
TFP14-316	3/16 3-Way Tee Hose Joiners
TFP14-14	1/4 3-Way Tee Hose Joiners
TFP14-516	5/16 3-Way Tee Hose Joiners
TFP14-38	3/8 3-Way Tee Hose Joiners
TFP14-12	1/2 3-Way Tee Hose Joiners
TFP14-34	3/4 3-Way Tee Hose Joiners

Extension Nipple - Female to Male BSP



Zinc plated steel connector for use when increased length is required, featuring a female thread on one end and a male thread on the other.



Product Code	d	R	d2	L	L1	L2	SW	Availability
EX18050	R1/8	R1/8	10	50	12	10	10	*
EX18075	R1/8	R1/8	10	75	12	10	10	*
EX18100	R1/8	R1/8	10	100	12	10	10	Stock Line
EX18125	R1/8	R1/8	10	125	12	10	10	*
EX14050	R1/4	R1/4	14	50	12	10	10	*
EX14075	R1/4	R1/4	14	75	12	10	10	*
EX14100	R1/4	R1/4	14	100	12	10	10	Stock Line
EX14125	R1/4	R1/4	14	125	12	10	10	*
EX14150	R1/4	R1/4	14	150	12	10	10	*

Tapered BSPT thread

* On Request



Product Code	Description
TF25E-18-90	1/8 Male to Female 90° Elbow
TF25E-14-90	1/4 Male to Female 90° Elbow
TF25E-38-90	3/8 Male to Female 90° Elbow
TF25E-12-90	1/2 Male to Female 90° Elbow

Nipple - Male Hexagonal BSP



Product Code	Description
TF27-18	1/8 Male BSP Hexagonal Nipple
TF27-14	1/4 Male BSP Hexagonal Nipple
TF27-38	3/8 Male BSP Hexagonal Nipple
TF27-12	1/2 Male BSP Hexagonal Nipple
TF27-34	3/4 Male BSP Hexagonal Nipple
TF27-10	1" Male BSP Hexagonal Nipple

Adaptor - Female to Male BSP



Product Code	Description
TF72-1818	1/8F - 1/8M Male to Female BSP Adaptors
TF72-1418	1/4F - 1/8M Male to Female BSP Adaptors
TF72-1414	1/4F - 1/4M Male to Female BSP Adaptors
TF72-3814	3/8F - 1/4M Male to Female BSP Adaptors
TF72-3838	3/8F - 3/8M Male to Female BSP Adaptors
TF72-1214	1/2F - 1/4M Male to Female BSP Adaptors
TF72-1238	1/2F - 3/8M Male to Female BSP Adaptors
TF72-1212	1/2F - 1/2M Male to Female BSP Adaptors
TF72-3412	3/4F - 1/2M Male to Female BSP Adaptors



Product Code	Description
TF24-1418	1/4 X 1/8 Male to Female Reducing Bush
TF24-3818	3/8 x 1/8 Male to Female Reducing Bush
TF24-3814	3/8 x 1/4 Male to Female Reducing Bush
TF24-1214	1/2 x 1/4 Male to Female Reducing Bush
TF24-1238	1/2 x 3/8 Male to Female Reducing Bush
TF24-3414	3/4 x 1/4 Male to Female Reducing Bush
TF24-3438	3/4 x 3/8 Male to Female Reducing Bush
TF24-3412	3/4 x 1/2 Male to Female Reducing Bush
TF24-1012	1 x 1/2 Male to Female Reducing Bush
TF24-1034	1 x 3/4 Male to Female Reducing Bush

Socket - Female Hexagonal BSP



Product Code	Description
TF26-18	1/8 Female Hexagonal Socket
TF26-14	1/4 Female Hexagonal Socket
TF26-38	3/8 Female Hexagonal Socket
TF26-12	1/2 Female Hexagonal Socket
TF26-34	3/4 Female Hexagonal Socket

Reducing Nipple - Male to Male BSP



Product Code	Description
TF73-1418	1/4M - 1/8M Male to Male Reducing Nipple
TF73-3818	3/8M - 1/8M Male to Male Reducing Nipple
TF73-3814	3/8M - 1/4M Male to Male Reducing Nipple
TF73-1214	1/2M - 1/4M Male to Male Reducing Nipple
TF73-1238	1/2M - 3/8 Male to Male Reducing Nipple
TF73-3438	3/4M - 3/8 Male to Male Reducing Nipple
TF73-3412	3/4M - 1/2M Male to Male Reducing Nipple



Product Code	Description
TF64-18	1/8 BSP Taper Plug
TF64-14	1/4 BSP Taper Plug
TF64-38	3/8 BSP Taper Plug
TF64-12	1/2 BSP Taper Plug
TF64-34	3/4 BSP Taper Plug
TF64-10	1" BSP Taper Plug

End Cap - Female BSP



Product Code	Description
TF33-18	1/8 Female BSP End Cap
TF33-14	1/4 Female BSP End Cap
TF33-38	3/8 Female BSP End Cap
TF33-12	1/2 Female BSP End Cap
TF33-34	3/4 Female BSP End Cap
TF33-10	1" Female BSP End Cap

T Joiner - Male BSP



Product Code	Description
TF50-14	1/4 3-Way Male BSP Tee

**BSPT Brass / Stainless**

Product Code	Size	Height
PP10	1/8	.250
PP20	1/4	.406
PP40	3/8	.406
PP60	1/2	.531
PP80	3/4	.531
PP100	1	.656

Cross Joiner - Female BSP



Product Code	Description
TF37-14	1/4 Female BSP Cross

T Joiner - Female BSP

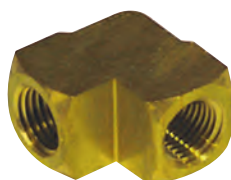


Product Code	Description
TF35-18	1/8 Female BSP Tee
TF35-14	1/4 Female BSP Tee
TF35-38	3/8 Female BSP Tee
TF35-12	1/2 Female BSP Tee
TF35-34	3/4 Female BSP Tee



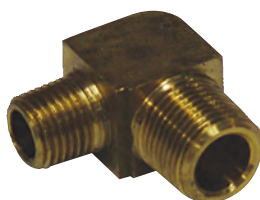
Product Code	Description
TF25E-18-45	1/8M - 1/8F Male to Female 45° Elbow
TF25E-14-45	1/4M - 1/4F Male to Female 45° Elbow
TF25E-38-45	3/8M - 3/8F Male to Female 45° Elbow
TF25E-12-45	1/2M - 1/2F Male to Female 45° Elbow

Elbow - 90° Female BSP



Product Code	Description
TF34-18	1/8 Female 90° Elbow
TF34-14	1/4 Female 90° Elbow
TF34-38	3/8 Female 90° Elbow
TF34-12	1/2 Female 90° Elbow
TF34-34	3/4 Female 90° Elbow

Elbow - 90° Male to Male BSP



Product Code	Description
TF48-1818	M1/8 - M1/8 Male to Male 90° Elbow
TF48-1414	M1/4 - M1/4 Male to Male 90° Elbow
TF48-3838	M3/8 - M3/8 Male to Male 90° Elbow
TF48-3814	M3/8 - M1/4 Male to Male 90° Elbow



Product Code	Description
TF31T8	310-Series Snap On with 1/2 Hose Tail

Air Coupler with Male BSP Thread - 310 Series



Product Code	Description
TF310-M2	310-Series Coupler with 1/8 Male BSP Thread
TF310-M4	310-Series Coupler with 1/4 Male BSP Thread
TF310-M6	310-Series Coupler with 3/8 Male BSP Thread
TF310-M8	310-Series Coupler with 1/2 Male BSP Thread

Air Coupler with Female BSP Thread - 310 Series



Product Code	Description
TF310-F4	310-Series Coupler with 1/4 Female BSP Thread
TF310-F6	310-Series Coupler with 3/8 Female BSP Thread
TF310-F8	310-Series Coupler with 1/2 Female BSP Thread



Product Code	Description
TF310-T4	T4 310-Series Coupler with Hose Tail
TF310-T6	T6 310-Series Coupler with Hose Tail
TF310-T8	T8 310-Series Coupler with Hose Tail

Air Snap on with Male BSP Thread - 310 Series



Product Code	Description
TF31-M2	310-Series Snap On with 1/8 Male BSP Thread
TF31-M4	310-Series Snap On with 1/4 Male BSP Thread
TF31-M6	310-Series Snap On with 3/8 Male BSP Thread
TF31-M8	310-Series Snap On with 1/2 Male BSP Thread

Air Snap on with Female BSP Thread - 310 Series



Product Code	Description
TF31-F4	310-Series Snap On with 1/4 Female BSP Thread
TF31-F6	310-Series Snap On with 3/8 Female BSP Thread



Extra deep socket is stronger and will not strip out

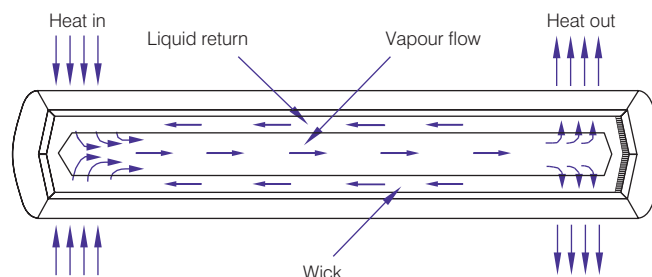
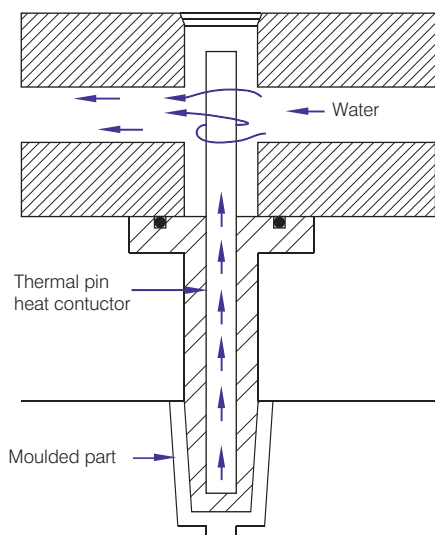
Product Code	Overall Length	NPT Plug Size	Blade-.005 Width-.015	Blade Thickness
CSB16x4	4	1/16	1/4	1/16
CSB16x8	8			
CSB18x4	4	1/8	5/16	1/16
CSB18x8	8			
CSB14x5	5	1/4	7/16	3/32
CSB14x10	10			
CSB38x6	6	3/8	9/16	3/32
CSB38x12	12			
CSB12x8	8	1/2	11/16	3/32
CSB12x16	16			
CSB34x12	12	3/4	15/16	1/8
CSB34x20	20			
CSB1x16	16	1	1 1/8	1/8
CSB1x24	24			

Baffle - Turbo Brass - NPT



Extra deep socket is stronger and will not strip out.
Spiral lengthens the cooling path and keeps the baffle centred, providing up to 11% greater flow rate.

Product Code	Overall Length	S Straight Length	NPT Plug Size	Blade-.005 Width-.015	Blade Thickness
CTB16x4	4	2	1/16	1/4	1/16
CTB16x8	8	4			
CTB18x4	4	2	1/8	5/16	1/16
CTB18x8	8	4			
CTB14x5	5	2	1/4	7/16	3/32
CTB14x10	10	4			
CTB38x6	6	2	3/8	9/16	3/32
CTB38x12	12	4			
CTB12x8	8	3	1/2	11/16	3/32
CTB12x16	16	5			
CTB34x12	12	4	3/4	15/16	1/8
CTB34x20	20	6			
CTB1x16	16	5	1	1 1/8	1/8
CTB1x24	24	8			



Heat Transfer Rods are designed to heat or cool cones, slides and inserts. Heat Transfer Rods conduct temperature over 10,000 times faster than copper.

Heat Transfer Rods operate best when 50% of the overall length is cooled using a water flow. +0.1 to +0.2mm should be up on the rod diameter for the correct fitment. Fitment hole should be drilled.

Length mm	1/4"	2mm	2.5mm	1/2"	3mm	4mm	5mm	6mm	8mm	10mm	12mm
50		HTR-02050	HTR-025050		HTR-03050	HTR-04050	HTR-05050				
55		HTR-02055									
60		HTR-02060	HTR-025060		HTR-03060	HTR-04060	HTR-05060	HTR-06060			
70		HTR-02070	HTR-025070		HTR-03070	HTR-04070	HTR-05070	HTR-06070			
75		HTR-02075	HTR-025075								
80		HTR-02080	HTR-025080		HTR-03080	HTR-04080	HTR-05080	HTR-06080			
100		HTR-02100	HTR-025100	HTR-124	HTR-03100	HTR-04100	HTR-05100	HTR-06100	HTR-08100		
105		HTR-02105									
125		HTR-02125	HTR-025125		HTR-03125	HTR-04125	HTR-05125	HTR-06125	HTR-08125	HTR-10125	
150	HTR-146					HTR-04150	HTR-05150	HTR-06150	HTR-08150	HTR-10150	HTR-12150
160											HTR-12160
165						HTR-04165					
175								HTR-06175	HTR-08175	HTR-10175	HTR-12175
200								HTR-06200	HTR-08200	HTR-10200	HTR-12200
250									HTR-08250	HTR-10250	HTR-12250
300	HTR-1412									HTR-10300	HTR-12300
350										HTR-10350	HTR-12350

Cascade Assembly



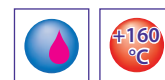
Hales Cascade Assembly includes a brass head, 12" brass tube, 2" long galvanized pipe nipple and brass pipe plug.

Product Code	Mould Nipple (NPT)	Pipe Tap Size (NPT)	Brass Tube OD	Hex Size	E	C	A	L
CM146N4	1/4	1/4	1/4	1	21/64	11/16	7/32	1 11/32

High temperature water hose
(EPDM construction)
Sold per metre with a minimum
order quantity of 10 metres



E Series



G Series



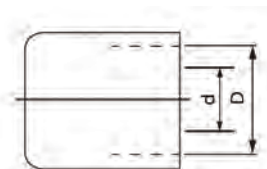
Product Code	I.D.	O.D.	Roll Length	Colour	Bend Radius	Max Temp
E10B	10mm	16.5mm	50m	BLUE	60°	160°
E10R	10mm	16.5mm	50m	RED	60°	160°
E13B	13mm	21mm	50m	BLUE	90°	160°
E13R	13mm	21mm	50m	RED	90°	160°
G13B	13mm	21mm	50m	BLUE	90°	100°
G13R	13mm	21mm	50m	RED	90°	100°
G19B	19mm	27mm	30m	BLUE	110°	100°
G19R	19mm	27mm	30m	RED	110°	100°

Hand Crimper

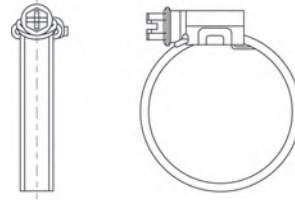


Product	Product Code	D
Hand Crimper	X100	10-36 mm

Ferrules



Product	Product Code	D	d.	Suits Hose
Ferrule	C10/17	17.5mm	10mm	G10/E10
Ferrule	C13/22	22.5mm	13mm	G13/E13
Ferrule	C19/29	29mm	19mm	G19/E19



Manufactured using a solid stainless steel band with a rolled edge and smooth underside to prevent hose damage and deliver high strength for superior sealing.

Product Code	Size	Qty in Pack
HC0816-PKT	11mm - 16mm	10
HC1320-PKT	13mm - 20mm	10
HC1524-PKT	16mm - 24mm	10
HC2238-PKT	22mm - 38mm	10

Teflon Tape

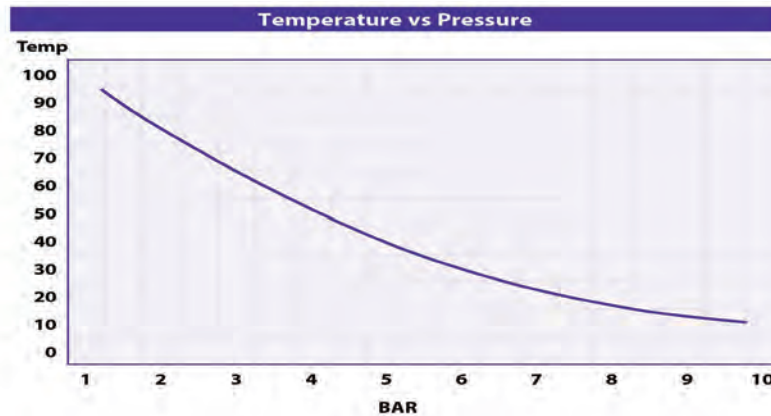


Product Code	Description
TEF	1/2 Teflon Tape

Two Ear Clips and Pincers



Product Code	Description	Size
PS01	Side Pincer	-
EAR15	ID 13-15	7.0
EAR17	ID 14-17	7.0
EAR18	ID 15-18	7.5
EAR20	ID 17-20	7.5
EAR23	ID 20-23	8.5
EAR27	ID 23-27	8.5
EAR28	ID 25-28	9.0



Product Code	Dia.	Description	Unit Size
PU04 Hose Black	4mm	Black Polyurethane Hose	1 roll = 20mtr
PU04 Hose Blue	4mm	Blue Polyurethane Hose	1 roll = 20mtr
PU05 Hose Blue	5mm	Blue Polyurethane Hose	1 roll = 20mtr
PU06 Hose Black	6mm	Black Polyurethane Hose	1 roll = 20mtr
PU06 Hose Blue	6mm	Blue Polyurethane Hose	1 roll = 20mtr
PU08 Hose Red	8mm	Red Polyurethane Hose	1 roll = 30mtr
PU08 Hose Black	8mm	Black Polyurethane Hose	1 roll = 30mtr
PU08 Hose Blue	8mm	Blue Polyurethane Hose	1 roll = 30mtr
PU10 Hose Red	10mm	Red Polyurethane Hose	1 roll = 30mtr
PU10 Hose Black	10mm	Black Polyurethane Hose	1 roll = 30mtr
PU10 Hose Blue	10mm	Blue Polyurethane Hose	1 roll = 30mtr
PU12 Hose Red	12mm	Red Polyurethane Hose	1 roll = 30mtr
PU12 Hose Black	12mm	Black Polyurethane Hose	1 roll = 30mtr
PU12 Hose Blue	12mm	Blue Polyurethane Hose	1 roll = 30mtr

Push Fitting - Threaded Tee



Product Code	Description
PB-4-01	4mm x 1/8 BSPT Threaded Tee Push Fitting
PB-4-02	4mm x 1/4 BSPT Threaded Tee Push Fitting
PB-5-01	5mm x 1/8 BSPT Threaded Tee Push Fitting
PB-5-02	5mm x 1/4 BSPT Threaded Tee Push Fitting
PB-6-01	6mm x 1/8 BSPT Threaded Tee Push Fitting
PB-6-02	6mm x 1/4 BSPT Threaded Tee Push Fitting
PB-8-01	8mm x 1/8 BSPT Threaded Tee Push Fitting
PB-8-02	8mm x 1/4 BSPT Threaded Tee Push Fitting



Product Code	Description
PC-04-01	4mm x 1/8 BSPT Threaded Straight Push Fitting
PC-04-02	4mm x 1/4 BSPT Threaded Straight Push Fitting
PC-05-01	5mm x 1/8 BSPT Threaded Straight Push Fitting
PC-05-02	5mm x 1/4 BSPT Threaded Straight Push Fitting
PC-06-01	6mm x 1/8 BSPT Threaded Straight Push Fitting
PC-06-02	6mm x 1/4 BSPT Threaded Straight Push Fitting
PC-08-01	8mm x 1/8 BSPT Threaded Straight Push Fitting
PC-08-02	8mm x 1/4 BSPT Threaded Straight Push Fitting
PC-10-02	10mm x 1/4 BSPT Threaded Straight Push Fitting
PC-12-02	12mm x 1/4 BSPT Threaded Straight Push Fitting

Push Fitting - Threaded 90°



Product Code	Description
PL-04-01	4mm x 1/8 BSPT Threaded 90° Push Fitting
PL-04-02	4mm x 1/4 BSPT Threaded 90° Push Fitting
PL-05-01	5mm x 1/8 BSPT Threaded 90° Push Fitting
PL-05-02	5mm x 1/4 BSPT Threaded 90° Push Fitting
PL-06-01	6mm x 1/8 BSPT Threaded 90° Push Fitting
PL-06-02	6mm x 1/4 BSPT Threaded 90° Push Fitting
PL-08-01	8mm x 1/8 BSPT Threaded 90° Push Fitting
PL-08-02	8mm x 1/4 BSPT Threaded 90° Push Fitting
PL-10-02	10mm x 1/4 BSPT Threaded 90° Push Fitting
PL-12-02	12mm x 1/4 BSPT Threaded 90° Push Fitting

Push Fitting - T Joiner



Product Code	Description
PE-04	4mm O.D. Tube Push Fitting
PE-05	5mm O.D. Tube Push Fitting
PE-06	6mm O.D. Tube Push Fitting
PE-08	8mm O.D. Tube Push Fitting



Product Code	Description
PY-04	4mm O.D. Y Push Fitting
PY-05	5mm O.D. Y Push Fitting
PY-06	6mm O.D. Y Push Fitting
PY-08	8mm O.D. Y Push Fitting

Push Fitting - Tube Connector - PUM



Product Code	Description
PUM-004	4mm PUM Push-In Tube Connector
PUM-006	6mm PUM Push-In Tube Connector
PUM-008	8mm PUM Push-In Tube Connector
PUM-0010	10mm PUM Push-In Tube Connector
PUM-0012	12mm PUM Push-In Tube Connector

Push Fitting - Tube Elbow - PVM

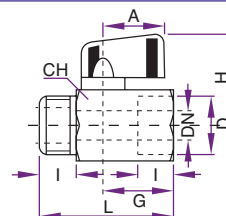
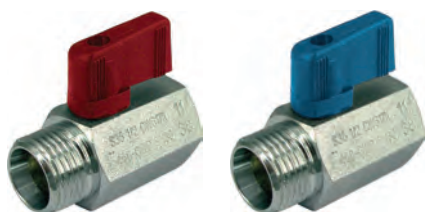


Product Code	Description
PVM-004	4mm PVM Push-In Tube Elbow
PVM-006	6mm PVM Push-In Tube Elbow
PVM-008	8mm PVM Push-In Tube Elbow
PVM-0010	10mm PVM Push-In Tube Elbow
PVM-0012	12mm PVM Push-In Tube Elbow



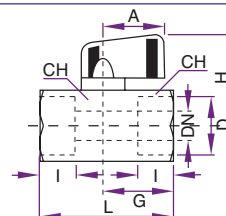
Product Code	Description
AIRGUN	Blow Gun (Red) Air Boy

Ball Valve Mini - Male / Female

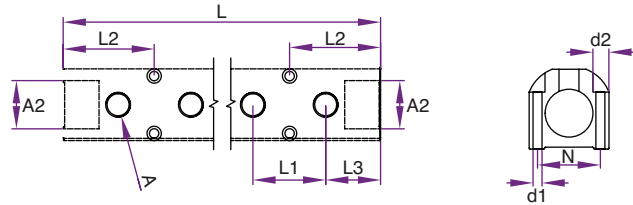


Part No.	Part No.	D	DN	I	L	G	A	H	CH
VMMF02R	VMMF02B	1/8"	5	10	41,5	22	22,5	31	21
VMMF04R	VMMF04B	1/4"	8	11	41,5	22	22,5	31	21
VMMF06R	VMMF06B	3/8"	8	11	41,5	22	22,5	31	21
VMMF08R	VMMF08B	1/2"	10	13	49	22	22,5	31	25

Ball Valve Mini - Female / Female

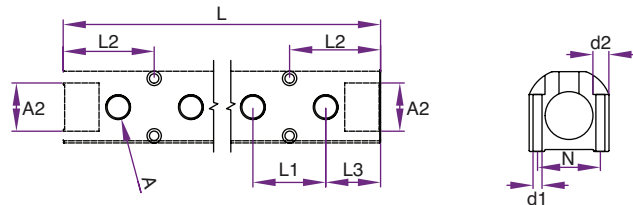


Part No.	Part No.	D	DN	I	L	G	A	H	CH
VM02R	VM02B	1/8"	6	10	41,5	22	22,5	31	21
VM04R	VM04B	1/4"	8	11	41,5	22	22,5	31	21
VM06R	VM06B	3/8"	8	11	41,5	22	22,5	31	21
VM08R	VM08B	1/2"	10	13	49	26	22,5	31	25

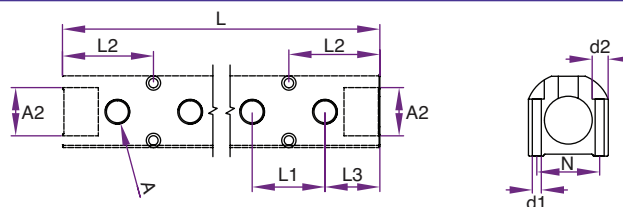


Part No.	Colour	Ports	A(BSPP)	A2(BSPP)	L2	L3	L1	d1	d2	N	L
IM3-4-1/4-R	Red	4	1/4"	3/4"	57,2	38,1	38,1	4,5	8	31	109,5
IM3-4-1/4-B	Blue	4	1/4"	3/4"	57,2	38,1	38,1	4,5	8	31	190,5
IM3-6-1/4-R	Red	6	1/4"	3/4"	57,2	38,1	38,1	4,5	8	31	266,7
IM3-6-1/4-B	Blue	6	1/4"	3/4"	57,2	38,1	38,1	4,5	8	31	266,7
IM3-8-1/4-R	Red	8	1/4"	3/4"	57,2	38,1	38,1	4,5	8	31	342,9
IM3-8-1/4-B	Blue	8	1/4"	3/4"	57,2	38,1	38,1	4,5	8	31	342,9

Manifold 1" - Inline Anodised

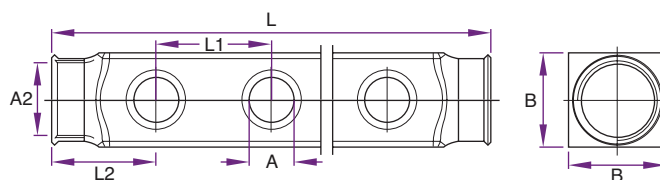


Part No.	Colour	Ports	A(BSPP)	A2(BSPP)	L2	L3	L1	d1	d2	N	L
IM4-4-1/4-R	Red	4	1/4"	1"	63,5	38,1	38,1	7	10,5	40,6	190,5
IM4-4-1/4-B	Blue	4	1/4"	1"	63,5	38,1	38,1	7	10,5	40,6	190,5
IM4-4-3/8-R	Red	4	3/8"	1"	63,5	38,1	38,1	7	10,5	40,6	228,6
IM4-4-3/8-B	Blue	4	3/8"	1"	63,5	38,1	38,1	7	10,5	40,6	228,6
IM4-6-1/4-R	Red	6	1/4"	1"	63,5	38,1	38,1	7	10,5	40,6	226,7
IM4-6-1/4-B	Blue	6	1/4"	1"	63,5	38,1	38,1	7	10,5	40,6	226,7
IM4-6-3/8-R	Red	6	3/8"	1"	63,5	38,1	38,1	7	10,5	40,6	330,2
IM4-6-3/8-B	Blue	6	3/8"	1"	63,5	38,1	38,1	7	10,5	40,6	330,2
IM4-8-1/4-R	Red	8	1/4"	1"	63,5	38,1	38,1	7	10,5	40,6	342,9
IM4-8-1/4-B	Blue	8	1/4"	1"	63,5	38,1	38,1	7	10,5	40,6	342,9
IM4-8-3/8-R	Red	8	3/8"	1"	63,5	38,1	38,1	7	10,5	40,6	431,8
IM4-8-3/8-B	Blue	8	3/8"	1"	63,5	38,1	38,1	7	10,5	40,6	431,8
IM4-10-3/8-R	Red	10	3/8"	1"	63,5	38,1	38,1	7	10,5	40,6	533,4
IM4-10-3/8-B	Blue	10	3/8"	1"	63,5	38,1	38,1	7	10,5	40,6	533,4
IM4-12-3/8-R	Red	12	3/8"	1"	63,5	38,1	38,1	7	10,5	40,6	635
IM4-12-3/8-B	Blue	12	3/8"	1"	63,5	38,1	38,1	7	10,5	40,6	635

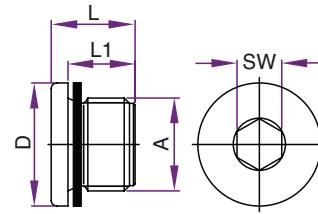


Part No.	Colour	Ports	A(BSPP)	A2(BSPP)	L2	L3	L1	d1	d2	N	L
IM6-4-1/2-R	Red	4	1/2"	1-1/2"	76,2	50,8	50,8	7	10,5	57	254
IM6-4-1/2-B	Blue	4	1/2"	1-1/2"	76,2	50,8	50,8	7	10,5	57	254
IM6-6-1/2-R	Red	6	1/2"	1-1/2"	76,2	50,8	50,8	7	10,5	57	355,6
IM6-6-1/2-B	Blue	6	1/2"	1-1/2"	76,2	50,8	50,8	7	10,5	57	355,6
IM6-8-1/2-R	Red	8	1/2"	1-1/2"	76,2	50,8	50,8	7	10,5	57	457,2
IM6-8-1/2-B	Blue	8	1/2"	1-1/2"	76,2	50,8	50,8	7	10,5	57	457,2
IM6-10-1/2-R	Red	10	1/2"	1-1/2"	76,2	50,8	50,8	7	10,5	57	558,8
IM6-10-1/2-B	Blue	10	1/2"	1-1/2"	76,2	50,8	50,8	7	10,5	57	558,8
IM6-12-1/2-R	Red	12	1/2"	1-1/2"	76,2	50,8	50,8	7	10,5	57	660,4
IM6-12-1/2-B	Blue	12	1/2"	1-1/2"	76,2	50,8	50,8	7	10,5	57	660,4

Manifold - Stainless Steel



Part No.	Ports	A (BSPP)	A2 (BSPP)	L	L1	L2	B
SSIM4-4-1/2	4	1/2"	1"	240	50	45	40
SSIM4-6-1/2	6	1/2"	1"	340	50	45	40
SSIM4-8-1/2	8	1/2"	1"	440	50	45	40
SSIM4-10-1/2	10	1/2"	1"	540	50	45	40
SSIM4-12-1/2	12	1/2"	1"	640	50	45	40
SSIM5-4-1/2	4	1/2"	1-1/4"	240	50	45	50
SSIM5-6-1/2	6	1/2"	1-1/4"	340	50	45	50
SSIM5-8-1/2	8	1/2"	1-1/4"	440	50	45	50
SSIM5-10-1/2	10	1/2"	1-1/4"	540	50	45	50
SSIM5-12-1/2	12	1/2"	1-1/4"	640	50	45	50



* With O-Ring

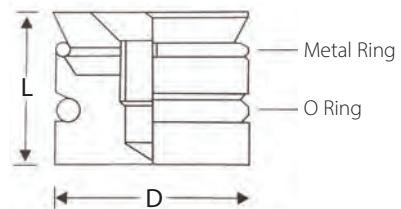
Part No.	A	D	L	L1	SW	VPE
DR3/4	G3/4"	32	21	16	12	1
DR1	G1"	40	22,5	16	17	1
DR1-1/2*	G1-1/2"	55	22,5	16	24	1

Brackets for Stainless Steel Manifolds

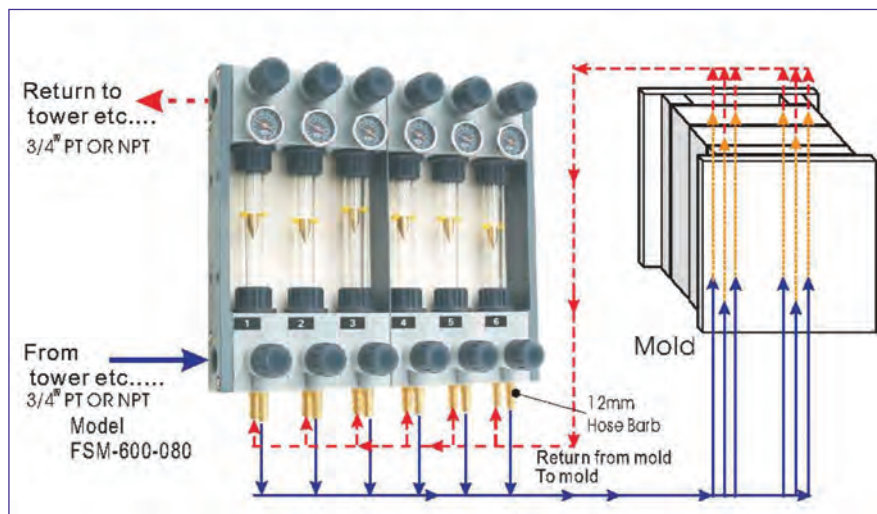
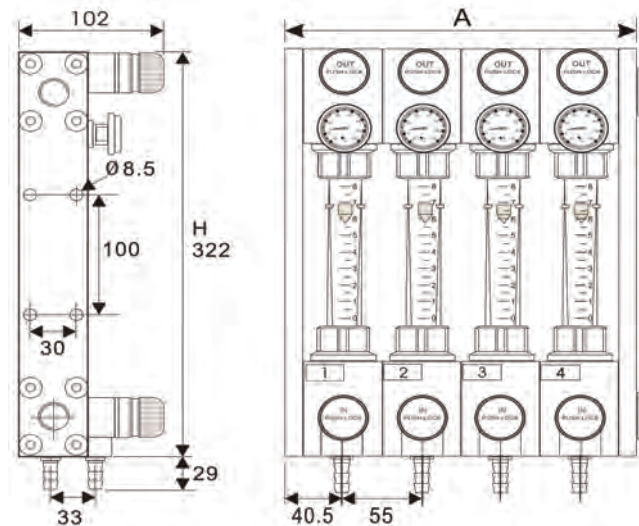


Part No.	Type
SS-Bracket	1"
SS-5-Bracket	1-1/4"
SS-6 Bracket	1-1/2"

Water Plug - Threadless



Product Code	Length (L)	Diameter (D)	Temperature Rating
TWPM-06	10	6mm	< 100°C
TWPM-08	10	8mm	< 100°C
TWPM-10	10	10mm	< 100°C
TWPM-12	12	12mm	< 100°C
TWPM-14	13	14mm	< 100°C
TWPM-16	14	16mm	< 100°C



Water Flow Regulator

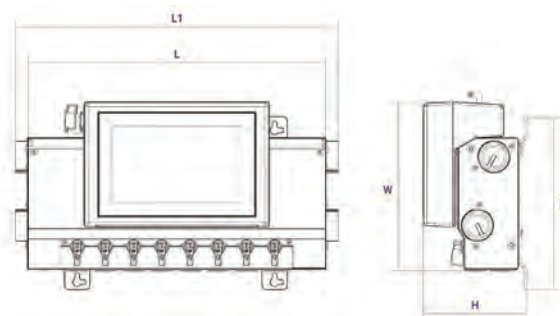
- Regulates water flow and water outlet temperature
- Individual zones sold separately
- Quality heavy duty construction
- Polyamide nylon flow tube
- Flow meter gauge for each tube
- Water temperature gauge for each tube
- Flow - 8 Lt per Minute per zone

Product Code	Zones	A (Width mm)	Depth (mm)	Height (mm)
FSM 100	1	75	105	351
FSM 200	2	130	105	351
FSM 300	3	185	105	351
FSM 400	4	245	105	351
FSM 600	6	358	105	351
FSM 800	8	468	105	351
FSM 1200	12	690	105	351



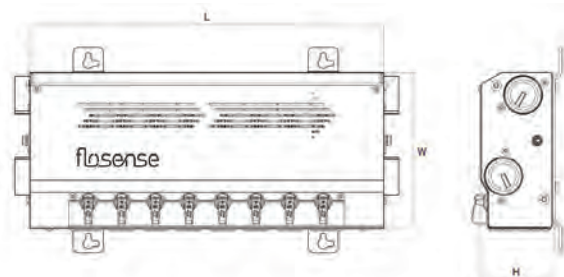
Flosense® Monitor Provides visibility of key cooling circuit metrics, improves efficiency, enhances productivity and profitability.

Product Code	Input	Size	Readability	Voltage	Alarm Output
FS-7100	4	7,1"	OPC-UA	12V	Yes



Flosense® Flow Regulator.

Product Code	Main Thread	Flow Capacity	BSPP In.	Port	L1	B	Temp
FFRM4-1-20	1"G	1-20 l/m	1/2"G	4	250 mm	205 mm	120°
FFRM4-2-40	1"G	2-40 l/m	1/2"G	4	250 mm	205 mm	120°
FFRM6-1-20	1"G	1-20 l/m	1/2"G	6	317 mm	205 mm	120°
FFRM6-2-40	1"G	2-40 l/m	1/2"G	6	317 mm	205 mm	120°
FFRM8-1-20	1"G	1-20 l/m	1/2"G	8	384 mm	205 mm	120°
FFRM8-2-40	1"G	2-40 l/m	1/2"G	8	384 mm	205 mm	120°
FFRM10-1-20	1"G	1-20 l/m	1/2"G	10	451 mm	205 mm	120°
FFRM10-2-40	1"G	2-40 l/m	1/2"G	10	451 mm	205 mm	120°
FFRM12-1-20	1"G	1-20 l/m	1/2"G	12	518 mm	205 mm	120°
FFRM12-2-40	1"G	2-40 l/m	1/2"G	12	518 mm	205 mm	120°



Flosense® Manifold.

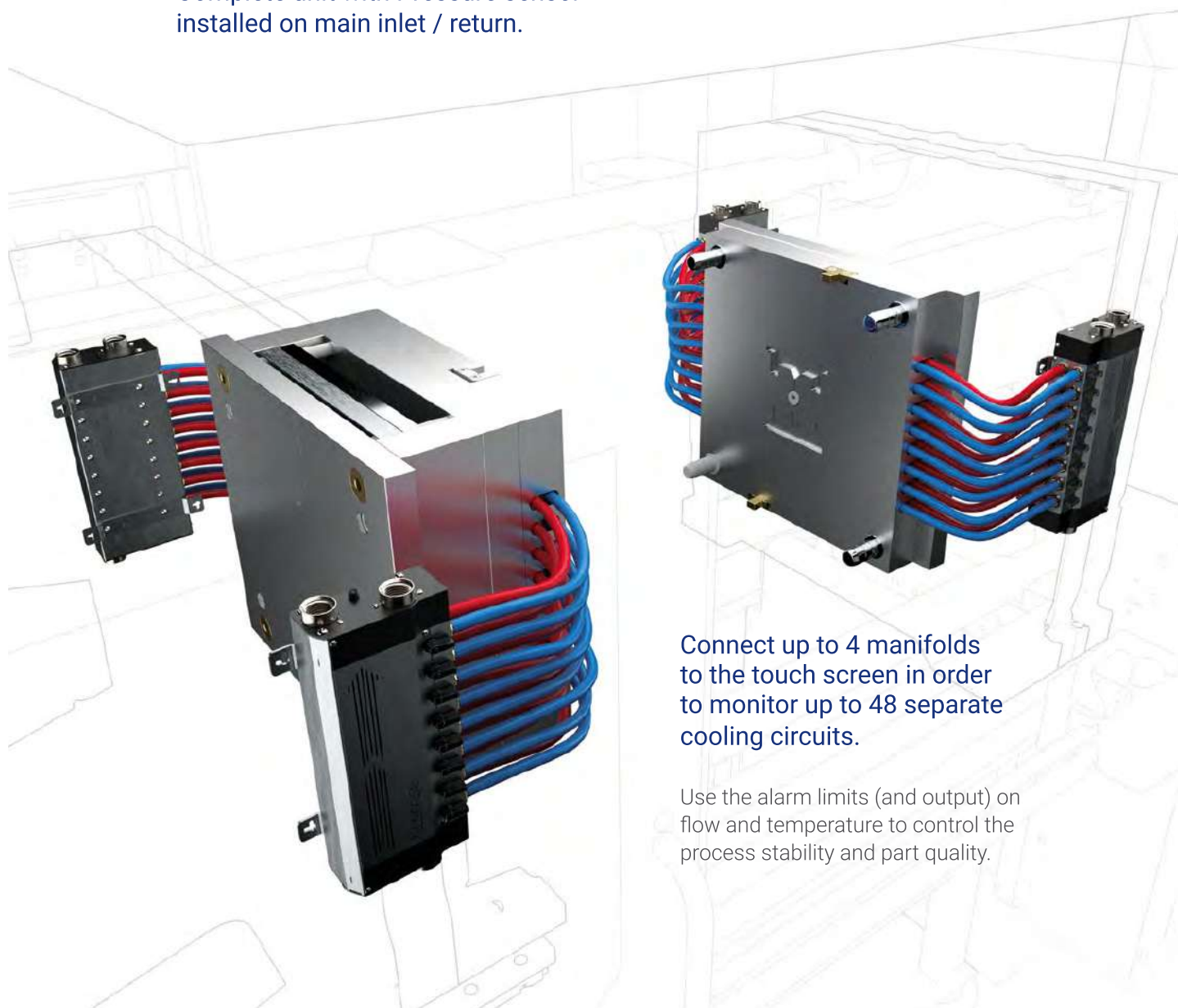
Product Code	Port	Flow	Height	Length	Width	Max Temp
F4M4-1-20	4	1-20 l/m	72	220	155	120°
F4M4HT-1-20	4	1-20 l/m	72	220	155	160°
F4M4-2-40	4	2-40 l/m	72	220	155	120°
F4M4HT-2-40	4	2-40 l/m	72	220	155	160°
F4M6-1-20	6	1-20 l/m	72	287	155	120°
F4M6HT-1-20	6	1-20 l/m	72	287	155	160°
F4M6-2-40	6	2-40 l/m	72	287	155	120°
F4M6HT-2-40	6	2-40 l/m	72	287	155	160°
F4M8-1-20	8	1-20 l/m	72	354	155	120°
F4M8HT-1-20	8	1-20 l/m	72	354	155	160°
F4M8-2-40	8	2-40 l/m	72	354	155	120°
F4M8HT-2-40	8	2-40 l/m	72	354	155	160°
F4M10-1-20	10	1-20 l/m	72	421	155	120°
F4M10HT-1-20	10	1-20 l/m	72	421	155	160°
F4M10-2-40	10	2-40 l/m	72	421	155	120°
F4M10HT-2-40	10	2-40 l/m	72	421	155	160°
F4M12-1-20	12	1-20 l/m	72	488	155	120°
F4M12HT-1-20	12	1-20 l/m	72	488	155	160°
F4M12-2-40	12	2-40 l/m	72	488	155	120°
F4M12HT-2-40	12	2-40 l/m	72	488	155	160°

flosense 4.0



MANIFOLD

Complete unit with Pressure sensor installed on main inlet / return.



Connect up to 4 manifolds to the touch screen in order to monitor up to 48 separate cooling circuits.

Use the alarm limits (and output) on flow and temperature to control the process stability and part quality.

Hales has a large range of Smartflow® Flow Regulators and can facilitate custom made configurations to order.

MECHANICAL FLOW REGULATORS

Compact solid brass or aluminium construction with Polysulfone windows.

- Temperature rating 115°C
- Anodized corrosion resistance
- Pressure rated to 100 psi (6.89 bar)
- Optional thermometer and pressure gauge
- Liquid-filled pressure gauge also available

FLOW REGULATORS

Inline or manifold mounted

- Leak free design
- Solid Brass Body
- Needle valve control
- Optional Temperature gauge
- Temperature rating to 115°C
- Pressure rated to 150psi (10.34 bar)

HOT WATER/OIL FLOWMETERS

Stainless steel construction to 288°C

- Throughput 6 gpm (us)
- Temperature rating to 288°C
- All stainless steel construction
- Pressure rate to 150 psi (10.34 bar)

TRACER® ELECTRONIC FLOWMETERS

Digital process control, local and remote signal outputs

- All model 3/8" to 2" BSP(P) supply
- 2-418 litres per minute
- Display of Temperature, Flow and BTU's
- Temperature and flow alarms
- Local display, remote alarm*, and variable output*
- Temperature rating to 110°C
- 100 psi (6.89 bar) or 150 psi (10.34 bar) 3/8"only

DELTA-Q® MODULAR FLOW REGULATOR

Delta-Q® Modular Flow Regulator is used in conjunction with other Smartflow® components such as threaded end caps, flowmeters, temperature and pressure gauges, Tracer Electronic Flowmeters or Dr. Eddy® Turbulent Flow Indicators. The Delta-Q® Regulator allows full adjustability of flow volume from unrestricted flow to complete shut off using the manual flow control knob.

- Compact size works well in restricted-space locations
- Rugged construction gives years of dependable service
- 210°F (99°C) Temperature Rating allows installation into a wide range of applications
- Common Flowmeter Configurations Stocked to provide same-day delivery in many cases
- No Mounting Restrictions ease installation in any position without extra brackets or hardware
- Leak-Free installation is based on proven flowmeter design





* Dimension : 193 x 71 x 225mm

No. of Zones	Description	Mastip Code	Power Input	Output Connector	
				Power Connector	TC Connector
1	CIS - 1	79-060-010	230V 1P	1 x 5 Pin Female Single Latch, Power & TC Combination	

Temperature Controller - Meticom 2 Zone



* Dimension : 193 x 71 x 225mm

No. of Zones	Description	Mastip Code	Power Input	Output Connector	
				Power Connector	TC Connector
2	CIS - 2	79-060-020	230V 1P	2 x 5 Pin Female Single Latch, Power & TC Combination	

Temperature Zone Controller



HRTC-B1 zone controller is a user friendly unit with an LED display that is compatible with most leading hot runner brands.

- Heavy duty connectors (rated 10A or 16A)
- Built-in cooling fan, circuit breaker and power input cable.
- Neon indicators illuminate after power on.
- Warning system to include fuse blowout, over load, thermocouple open/reverse, temperature, heater fault, high load etc.

Product Code	Description
HRTC-B1	Zone Controller



- Unique Construction
- LED display
- Fuzzy pid control
- Two temperature scales selectable (C° / F°)
- Two thermocouple types (J or K)
- Output type: zero cross or phase angle
- can be installed on floor stand
- Cabinet zones: 5, 8 or 12
- Universal size for North American standard
- Easy operation & convenient replacement.
- Auto or manual function
- Dehumidify soft start function
- High / low temperature alarm
- Thermocouple open, reverse, short alarm
- Heater open, short, overload alarm
- Over voltage protection function
- Remote standby function (optional)
- Alarm output function (optional)

Product Code	Description
MAS-MFX5	5 Zone Mainframe
MAS-MFX8	8 Zone Mainframe
MAS-MFX12	12 Zone Mainframe



Product Code	Description
PIM1BX10	10 Amp Unit

Temperature Control - Multi Zone Systems



16 to 48 Zone Mainframes are also available to order • 30 Amp option also available • Modules sold separately.

Product Code	Description
MFFMP2	2 Zone Mainframe
MFFMP3	3 Zone Mainframe
MFX5	5 Zone Mainframe
MFX8	8 Zone Mainframe
MFX12	12 Zone Mainframe

Hot Runner Controllers - RMA Modular



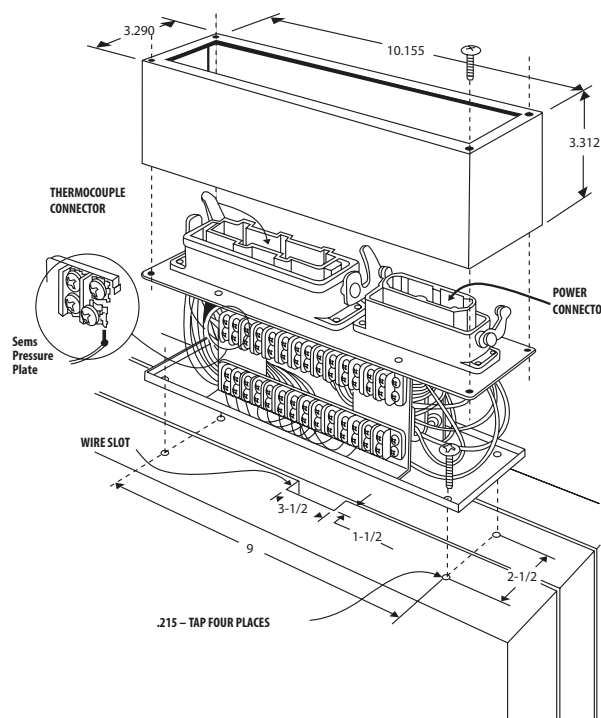
RMA Module

- Simultaneous digital setpoint and digital temperature indication.
- Accepts Type J or Type K thermocouple input (jumper selectable).
- Auto-tuning, with adjustable proportional band and rate.
- Bumpless auto/manual transfer.
- CompuStep bakeout feature prevents moisture at start-up.
- Built-in loop break, short, open, and reverse thermocouple protection.
- Jumper-selectable self-start mode.
- Current monitor feature displays average current to load.
- CE-compliant.

Product Code
RMAX15



1. The terminal blocks are completely prewired to both the Power and Thermocouple Connectors.
2. Terminal blocks are numbered by MOLD ZONE for ease of installation and troubleshooting.
3. Feed the wires from the mould wire slot through the opening(s) in the bottom of the Mould Wiring System. Slide the mould wires under the SEMS pressure plate on the appropriate zone-numbered terminal.
4. The RED and WHITE wires are the THERMOCOUPLE SIDE. Install thermocouple wire from the mould.+(White/upper) -(Red/lower) to the corresponding zone number on the upper and lower terminal blocks.
5. Install the POWER wires on the opposite two terminal blocks marked Power side to corresponding number on the terminal blocks, one to upper and one to lower.
6. Place the cover over the Mould Wiring System and tighten with the four screws supplied.



Product Code	Zones	Length Y	Width X	Height H	Mounting Hole M1	Mounting Hole M2
PTBC005-A	005	8.66"	2.75"	4.50"	1.500	8.031
PTBC008-A	008	9.47"	2.75"	4.50"	1.500	8.843
PTBC012-A	012	10.53"	2.75"	4.50"	1.500	9.906

Module Fuses



Product Code	Amps
ABC10	10
ABC15	15



Product Code	Amps
HWCC-1	15
HWCC-2	30

Blank Panel



Must be used to cover unused zones in main frames. Supplied with push-pull panel fasteners.

Product Code
MFBP

Universal Floor Stand



Product Code	Zones
MFS5812	Adjustable for 5, 8 & 12 zone



5 pin combination Thermocouple/Power Cable.

Product Code	Length
MPTC10	10'
MPTC20	20'

Power Cables

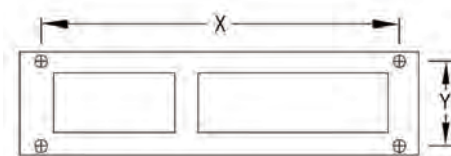


Product Code	Zones	Length
MPC5C10	5 Zones	10'
MPC5C20	5 Zones	20'
MPC8C10	8 Zones	10'
MPC8C20	8 Zones	20'
MPC12C10	12 Zones	10'
MPC12C20	12 Zones	20'

Thermocouple Cables



Product Code	Zones	Length
TC5C10	5 Zones	10'
TC5C20	5 Zones	20'
TC8C10	8 Zones	10'
TC8C20	8 Zones	20'
TC12C10	12 Zones	10'
TC12C20	12 Zones	20'



Product Code	International Code	Pin	Box Dimension L x W x H	Screw Distance X Y	
79-010-701	PTC5TB	1 x 25, 1 x 10 pin	220 x 70 x 108mm	204mm	38mm
79-010-702	PTC8TC	1 x 25, 1 x 16 pin	240.5 x 70 x 108mm	224.6mm	38mm
79-010-703	PTC12TB	1 x 25, 1 x 24 Pin	267.5 x 70 x 108mm	251.6mm	38mm

Thermocouple Connectors



Product Code	Description	Zones
MTC5	Mould Thermocouple Connector	5 Zones
MTC8	Mould Thermocouple Connector	8 Zones
MTC12	Mould Thermocouple Connector	12 Zones

Mould Power Input Connectors



Product Code	Description	Zones
PIC5	Mould Power Connector	5 Zones
PIC8	Mould Power Connector	8 Zones
PIC12	Mould Power Connector	12 Zones



CKPTM1

Cable, Frame End
5-Pin Combo Mould Power/ Thermocouple Connectors

Product Code

CKPTM-1



CKPTOC1

Frame
5-Pin Combo Mould Power/ Thermocouple Connectors

Product Code

CKPTOC-1



CKPTF1

Cable, Mould-End
5-Pin Combo Mould Power/ Thermocouple Connectors

Product Code

CKPTF-1



CKPTIC1

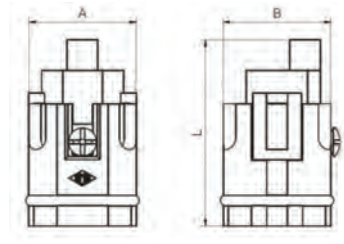
Mould
5-Pin Combo Mould Power/ Thermocouple Connectors

Product Code

CKPTIC-1



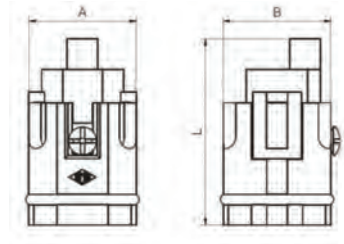
**Inserts Male
CKM**



Product Code	#Poles	A	B	L	Size
CKM03	3+E	21	21	30,5	21.21
CKM04	4+E	21	21	36,5	21.21



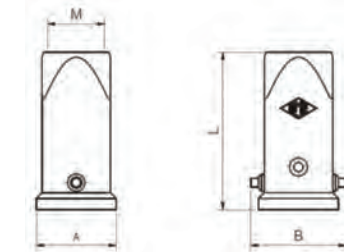
**Inserts Female
CKF**



Product Code	#Poles	A	B	L	Size
CKF03	3+E	21	21	30,5	21.21
CKF04	4+E	21	21	36,5	21.21



**Straight Hood
MKAV**



Product Code	#Poles	Levers	A	B	L	M	Size
MKAV20	3/4+E	Single	28	33,5	60,5	M20	21.21



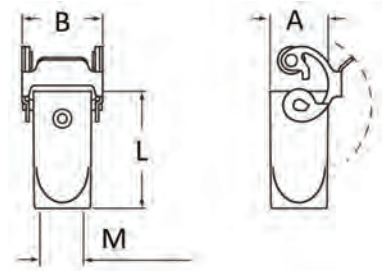
**Panel Mount Base
CKAX**



Product Code	#Poles	Levers	A	B	L	Size
CKAV031	3/4+E	Single	57,5	32	24	21.21



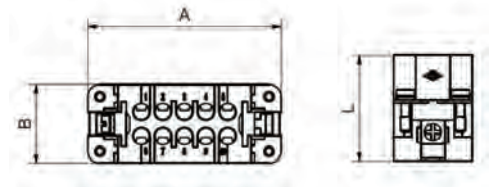
Straight Hood, Single Lever
MKAXVG



Product Code	#Poles	Levers	A	B	L	Size
MKAXVG20	3/4+E	Single	24	33	51,5	21.21



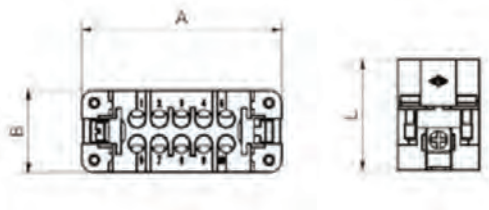
Inserts Male, Screw Terminals
CDAM



Product Code	#Poles	A	B	L	Size
CDAM10	10	56,5	23	31	49.16
CDAM16	16	73	23	31	66.16



Inserts Female, Screw Terminals
CDAF



Product Code	#Poles	A	B	L	Size
CDAF10	10	56,5	23	31	49.16
CDAF16	16	73	23	31	66.16



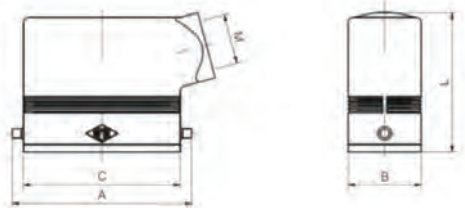
Top Entry Hood, Single Lever
MZAV



Product Code	#Poles	Levers	A	B	C	L	L1	M	Size
MZAV15L20	10	Single	72	36	63	64,5	14,5	M20	49.16
MZAV25L20	16/25	Single	88,5	36	79,5	70,5	14,5	M20	66.16
MZAV25L25	16/25	Single	88,5	36	79,5	70,5	14,5	M25	66.16



Side Entry Hood, Single Lever
MZO



Product Code	#Poles	Levers	A	B	C	L	M	Size
MZO15L20	10	Single	72	29,4	63	55,9	M20	49.16
MZO25L25	16	Single	88,5	29,4	79,5	55,9	M25	66.16



Panel Mount Housing, Single Lever
CZI



Product Code	#Poles	Levers	A	B	C	L	Size
CZI15L	10	Single	83	32	76	44	49.16
CZI25L	16/25	Single	98	32	93	44	66.16



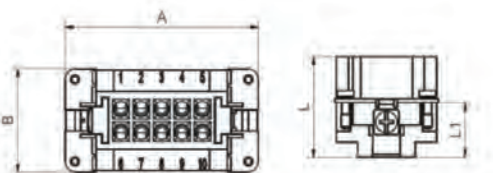
Surface Mount Housing, Single Lever
MZO, MZAP



Product Code	#Poles	Levers	A	B	C	L	M	Size
MZO15L25	10	Single	85	50	76	52	M25	49.16
MZAP25L25	16/25	Single	101	50	93	57	M25	66.16



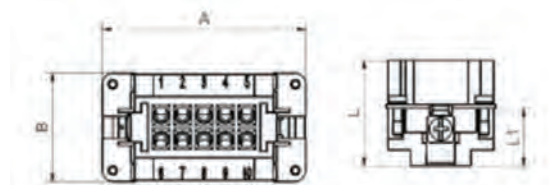
Inserts Male
CNEM



Product Code	#Poles	A	B	L	L1	Size
CNEM06T	6	50	34	33	18	44.27
CNEM10T	10	63,4	34	33	18	57.27
CNEM16T	16	83,5	34	33	18	77.27
CNEM24T	24	110,3	34	33	18	104.27



**Inserts Female
CNEF**



Product Code	#Poles	A	B	L	L1	Size
CNEF06T	6	50	34	33	18	44.27
CNEF10T	10	63,4	34	33	18	57.27
CNEF16T	16	83,5	34	33	18	77.27
CNEF24T	24	110,3	34	33	18	104.27



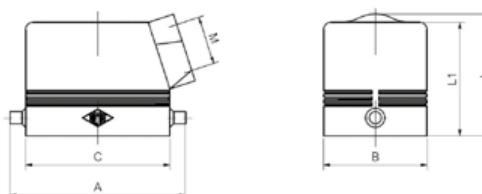
**Top Entry Hood, Single Lever
MHV**



Product Code	#Poles	Levers	A	B	C	L	L1	M	Size
MHV06L25	6	Single	72	43	60	53	40	M20	44.27
MHV10L20	10	Single	87	43	73	58	45	M20	57.27
MHV16L25	16	Single	108	43	93,5	58	45	M25	77.27
MHV24L32	24	Single	135	43	120	68	55	M32	104.27
MHV48L32	48	Single	150,5	90	121	121	98	M40	104.62



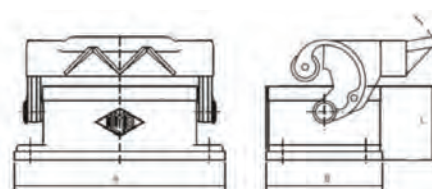
**Side Entry Hood, Single Lever
MHO**



Product Code	#Poles	Levers	A	B	C	L	L1	M	Size
MHO06L20	6	Single	73	43	60	50,4	47	M20	44.27
MHO10L20	10	Single	87	43	73	52	49	M20	57.27
MHO16L25	16	Single	108	43	93,5	63	60	M25	77.27
MHO24L32	24	Single	135	43	120	63	60	M32	104.27
MHO48L32	48	Single	150,5	90	121	98	118	M40	104.62



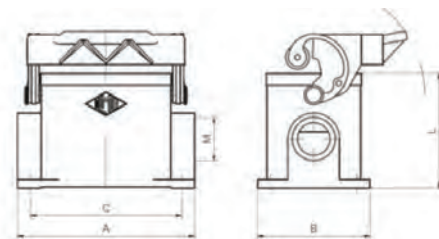
**Panel Mount Base, Single Lever
CHI**



Product Code	#Poles	Levers	A	B	L	Size
CHI06L	6	Single	82,5	45,5	29	44.27
CHI10L	10	Single	95,5	45,5	29	57.27
CHI16L	16	Single	115,5	45,5	29	77.27
CHI24L	24	Single	142,5	45,5	29	104.27
CHI48L	48	Single	167,5	93	42	104.62



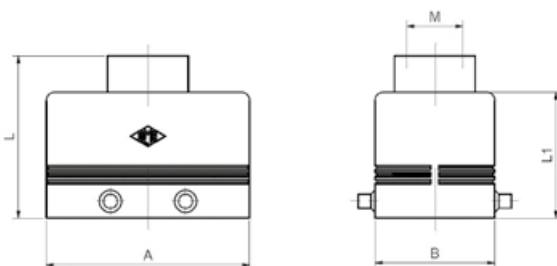
**Surface Mount Base, Single Lever
MHP**



Product Code	#Poles	Levers	A	B	C	L	M	Size
MHP06L20	6	Single	82	52	70	53	M20	44.27
MHP10L20	10	Single	93,5	52	82	57	M20	57.27
MHP16L25	16	Single	117	57	105	63	M25	77.27
MHP24L25	24	Single	144	57	132	63	M25	104.27



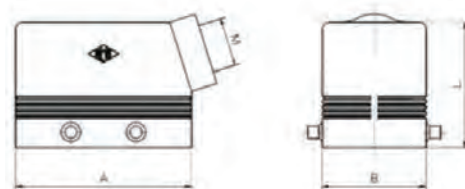
**Top Entry Hood, Double Lever
MHV**



Product Code	#Poles	Levers	A	B	L	L1	M	Size
MHV10.20	10	Double	73	43	58	45	M20	57.27
MHV16.25	16	Double	93,5	43	58	45	M25	77.27
MHV24.32	24	Double	120	43	68	55	M32	104.27
MHV32.32	32	Double	93,5	82,5	117	94	M32	77.62



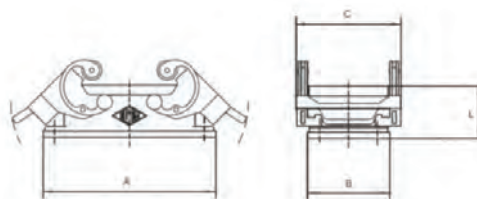
**Side Entry Hood, Double Lever
MHO**



Product Code	#Poles	Levers	A	B	L	M	Size
MHO10.20	10	Double	73	43	52	M20	57.27
MHO16.25	16	Double	93,5	43	63	M25	77.27
MHO24.32	24	Double	120	43	63	M32	104.27
MHO32.32	32	Double	93,5	82,5	94	M32	77.62



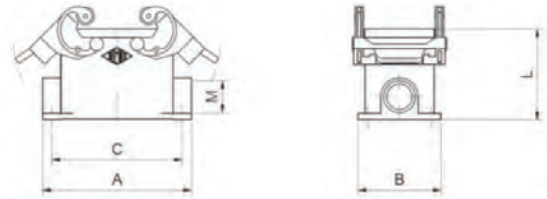
**Panel Mount Base, Double Lever
CHI**



Product Code	#Poles	Levers	A	B	C	L	Size
CHI10	10	Double	95,5	45,5	58	29	57.27
CHI16	16	Double	115,5	45,5	58	29	77.27
CHI24	24	Double	142,5	45,5	58	29	104.27
CHI32	32	Double	126	45,5	98,5	35	77.62



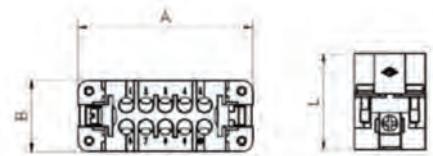
**Surface Mount Base, Double Lever
MHP**



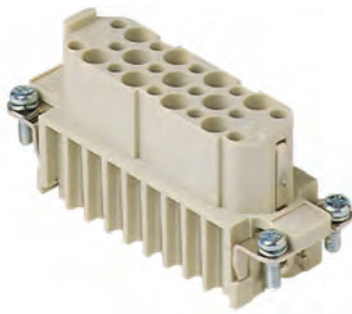
Product Code	#Poles	Levers	A	B	C	L	M	Size
MHP10.20	10	Double	93,5	52	82	57	M20	57.27
MHP16.25	16	Double	117	57	105	63	M25	77.27
MHP24.25	24	Double	144	57	132	63	M25	104.27
MHP32.40	32	Double	125	84	112	90	M40	77.62



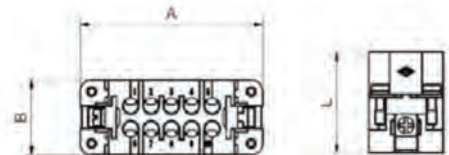
**Inserts Male, 3 Row, High Density Crimp Terminal
CDM**



Product Code	#Poles	A	B	L	Size
CDM25	25	73	23	31	66.16



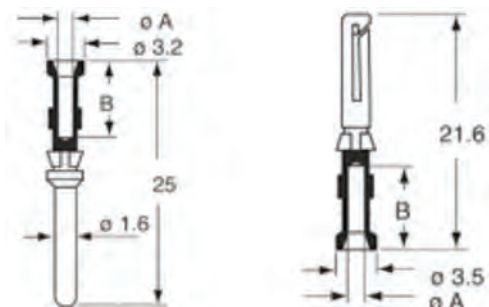
**Inserts Female, 3 Row, High Density Crimp Terminal
CDM**



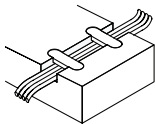
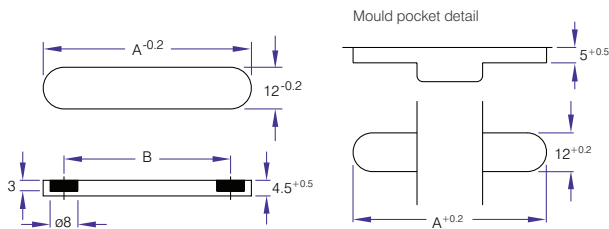
Product Code	#Poles	A	B	L	Size
CDM25	25	73	23	31	66.16



**Crimp
CDMA/CDFA**



Product Code	Type	Wire Size	Ø-A	Ø-B
CDMA0.5	Male	0,5mm ²	1,1	8
CDFA0.5	Female	0,5mm ²	1,1	8
CDMA1.5	Male	1,5mm ²	1,8	8
CDFA1.5	Female	1,5mm ²	1,8	8

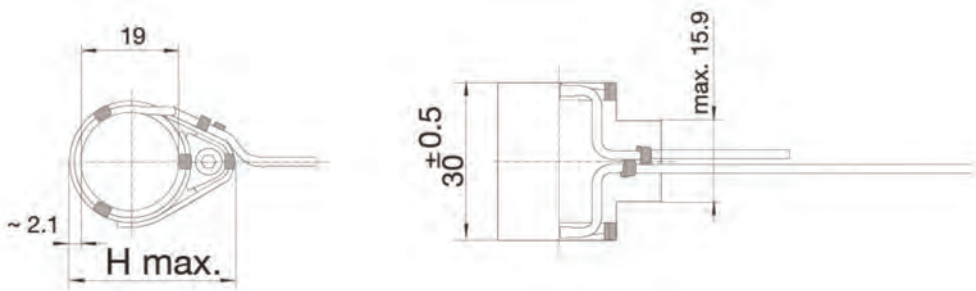


Product Code	A	B	Material	Max Temp
SC.401245	40	28	100	80°C
SC.601245	60	48	100	80°C

Micro Coil Heaters

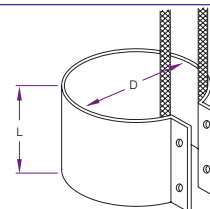


Microcoil heaters with axial screwed clamp band.



Product Code	ID	L	Watts
WRP149	19	30	149w
WRP268	19	30	268w

- Low profile flexible leads
- Premium MICA insulation
- Stainless bands
- Welded style made to order
- Other sizes made to order



Product Code	D	L	Watts
BH2525	25	25	125w
BH2538	25	38	150w
BH3030	30	30	150w
BH3040	30	40	125w
BH3075	30	75	300w
BH3225	32	25	115w
BH3232	32	32	150w
BH3238	32	38	180w
BH3250	32	50	250w
BH3275	32	75	300w
BH3538	35	38	200w
BH3838	38	38	200w
BH3850	38	50	300w
BH3875	38	75	400w
BH4030	40	30	200w
BH4038	40	38	220w
BH4060	40	60	300w
BH4090	40	90	350w
BH5038	50	38	250w
BH5050	50	50	300w
BH5075	50	75	400w
BH6060	60	60	275w

Custom Band and Barrel Heaters

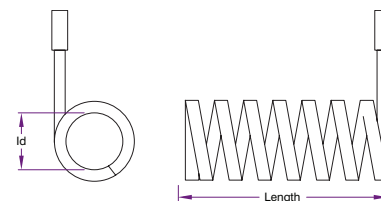


Made to Order

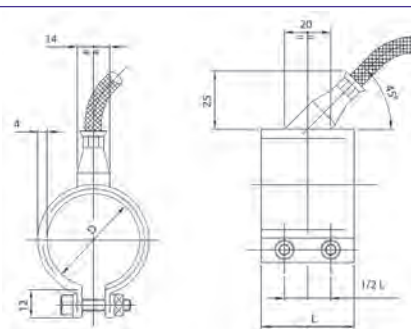
Band and Barrel Heaters made to your requirements.
Ask for our custom heater form to fill in.

Scan this QR Code to Download a Custom Form

Coil Heaters - Special



Made to order from stock with and without thermocouple
Manufactured in-house, specify ID and length.



- Sealed band heater
- Tear resistant power cable
- Standard cable outlet: axial 45°
- Special sizes made to order

* These sizes available on request

Product Code	D	L	Watts	Availability
PRMX-2525	25	25	85	Stock Line
PRMX-2535	25	35	125	Stock Line
PRMX-3020	30	20	100	*
PRMX-3025	30	25	130	*
PRMX-3030	30	30	160	Stock Line
PRMX-3035	30	35	200	*
PRMX-3040	30	40	165	Stock Line
PRMX-3050	30	50	275	Stock Line
PRMX-3238	32	38	195	Stock Line
PRMX-3525	35	25	160	*
PRMX-3530	35	30	200	*
PRMX-3535	35	35	195	Stock Line
PRMX-3540	35	40	195	Stock Line
PRMX-3545	35	45	310	*
PRMX-3825	38	25	140	Stock Line
PRMX-3838	38	38	215	Stock Line
PRMX-3850	38	50	300	Stock Line
PRMX-4020	40	20	160	*
PRMX-4025	40	25	190	*
PRMX-4030	40	30	160	Stock Line
PRMX-4035	40	35	270	*
PRMX-4040	40	40	225	Stock Line
PRMX-4060	40	60	305	Stock Line
PRMX-4045	40	45	350	*
PRMX-4525	45	25	210	*
PRMX-4530	45	30	260	*
PRMX-4535	45	35	310	*
PRMX-4540	45	40	350	*
PRMX-4545	45	45	400	*
PRMX-4550	45	50	450	*
PRMX-4555	45	55	490	*
PRMX-5020	50	20	190	*
PRMX-5025	50	25	240	*
PRMX-5030	50	30	290	*
PRMX-5035	50	35	340	*
PRMX-5040	50	40	280	Stock Line
PRMX-5050	50	50	350	Stock Line
PRMX-5060	50	60	420	Stock Line
PRMX-5520	55	20	210	*
PRMX-5525	55	25	270	*
PRMX-5530	55	30	320	*
PRMX-5535	55	35	380	*
PRMX-5540	55	40	430	*
PRMX-5550	55	50	540	*
PRMX-6020	60	20	230	*
PRMX-6025	60	25	290	*
PRMX-6030	60	30	350	*
PRMX-6035	60	35	410	*
PRMX-6040	60	40	335	Stock Line
PRMX-6050	60	50	600	*
PRMX-6060	60	60	505	Stock Line
PRMX-6520	65	20	250	*
PRMX-6525	65	25	320	*

Product Code	D	L	Watts	Availability
PRMX-6530	65	30	380	*
PRMX-6535	65	35	450	*
PRMX-6540	65	40	520	*
PRMX-6550	65	50	650	*
PRMX-7020	70	20	270	*
PRMX-7025	70	25	340	*
PRMX-7030	70	30	410	*
PRMX-7035	70	35	505	Stock Line
PRMX-7040	70	40	560	*
PRMX-7050	70	50	700	*
PRMX-7060	70	60	840	*
PRMX-7520	75	20	290	*
PRMX-7525	75	25	370	*
PRMX-7530	75	30	440	*
PRMX-7535	75	35	520	*
PRMX-7540	75	40	560	*
PRMX-7550	75	50	750	*
PRMX-7560	75	60	900	*
PRMX-8020	80	20	310	*
PRMX-8025	80	25	390	*
PRMX-8030	80	30	470	*
PRMX-8035	80	35	560	*
PRMX-8040	80	40	640	*
PRMX-8050	80	50	800	*
PRMX-8060	80	60	960	*
PRMX-8520	85	20	330	*
PRMX-8525	85	25	420	*
PRMX-8530	85	30	500	*
PRMX-8535	85	35	590	*
PRMX-8540	85	40	680	*
PRMX-8550	85	50	850	*
PRMX-8560	85	60	1020	*
PRMX-9020	90	20	350	*
PRMX-9025	90	25	440	*
PRMX-9030	90	30	540	*
PRMX-9035	90	35	630	*
PRMX-9040	90	40	720	*
PRMX-9050	90	50	900	*
PRMX-9060	90	60	1080	*
PRMX-9520	95	20	370	*
PRMX-9525	95	25	470	*
PRMX-9530	95	30	570	*
PRMX-9535	95	35	660	*
PRMX-9540	95	40	760	*
PRMX-9550	95	50	950	*
PRMX-9560	95	60	1150	*
PRMX-10020	100	20	380	*
PRMX-10025	100	25	500	*
PRMX-10030	100	30	600	*
PRMX-10035	100	35	700	*
PRMX-10040	100	40	800	*
PRMX-10050	100	50	1000	*
PRMX-10060	100	60	1200	*



Reduce Your Power Consumption



UniVest®: For Plastic Processors

UniVest® insulation jackets provide a low-cost solution for reducing energy costs, and shortening start-up time between jobs by retaining heat inside barrels, extruders, dies and hoses. This will lower the ambient temperature in your facility, and lower the overhead cost for equipment operations and air conditioning.

Features

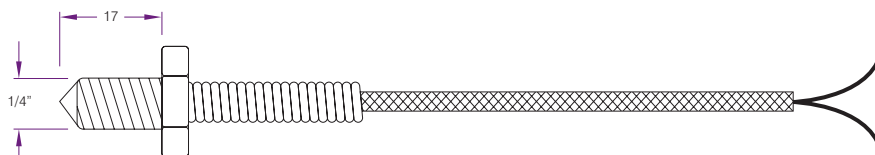
- High temperature strap and buckle fastening system
- PTFE coated exterior
- Withstand temperatures up to 1200°F
- High density ceramic fibre insulation

Benefits

- Improves equipment process
- Protects employees and equipment
- No equipment downtime
- Simple and quick installation
- Reduces energy consumption
- 100% Asbestos free

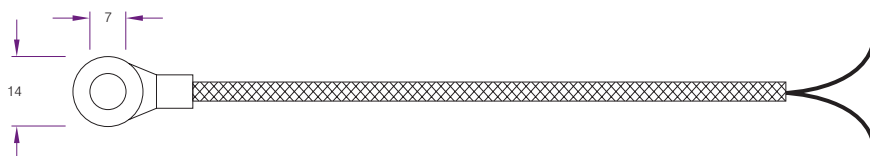


Thermocouple - Threaded Type



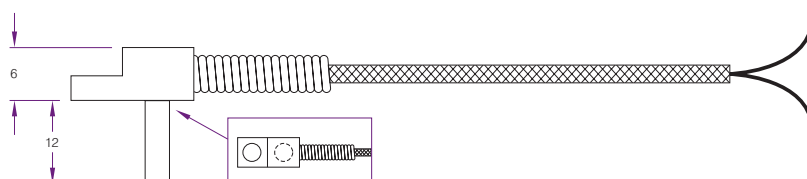
Product Code	Description
ETC0251	Threaded J Type

Thermocouple - Flat Washer Type



Product Code	Description
ETC0168	Flat Washer J Type

Thermocouple - Surface Pin Type



Product Code	Description
MASTE7003	Surface Pin J Type

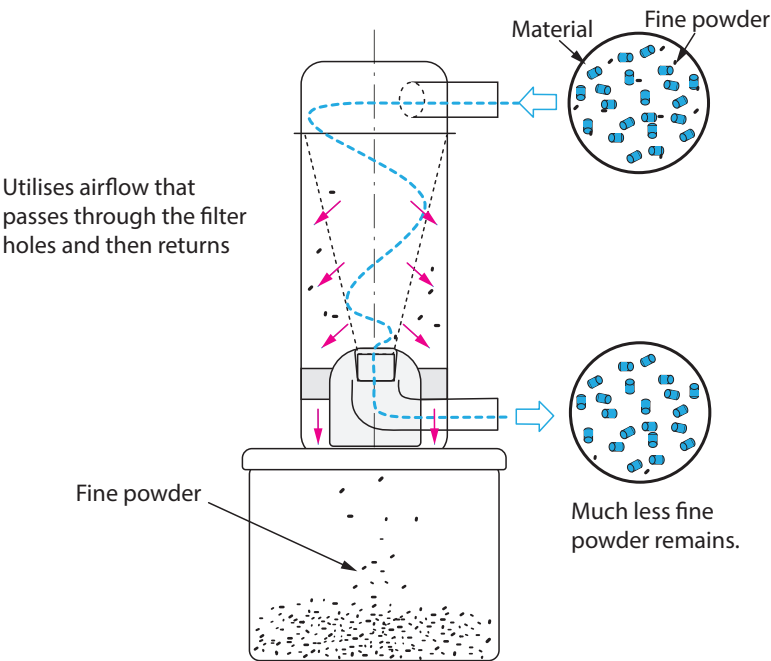


Designed to eliminate powder and fines contamination from plastic pellets, the ARV 38 De-Duster can be installed into any material line, to ensure more stable plasticising and eliminate product defects caused by incomplete melting.

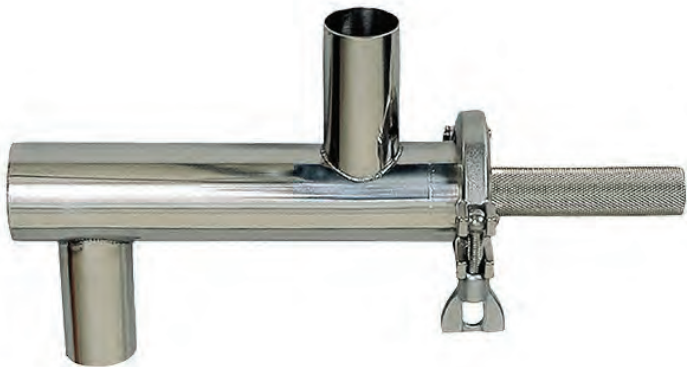
This new innovative ARV 38 De-Duster's unique filtering design allows contamination removal from the material itself. The material flow blends both material and vacuum pathways to achieve highly increased contamination and dust removal.

Can be retro-fitted into any type of loading system using a vacuum-transport principle. In addition, when the ARV 38 De-Duster is combined with a traditional vacuum-line dedusting system, material dust and contamination is virtually eliminated during the transport process.

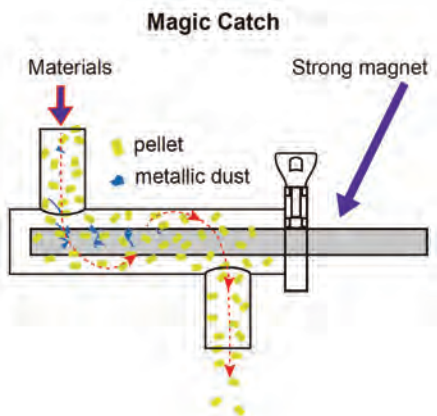
The ARV 38 De-Duster increases the removal of fine powders and dust using a cyclonic effect plus suction air flow through the filter holes.



Product Code	Details	Specifications
MATS-ARV-38	Port size (1-in, 1-out)	1.5" Dia. x 2
	Items included	1 x Mounting bracket, 2 x Hose clamps
	Dimensions L x W x H	229 x 280 x 635mm (9" x 11" x 25")

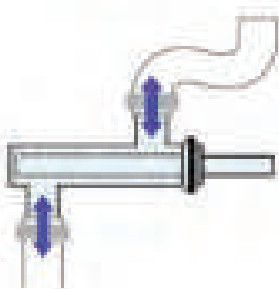


The Magic Catch in-line device uses a powerful magnet, installed in the resin line designed to catch any ferrous metal particles. It comes in several configuration shapes and tube diameter sizes to adapt to common material line sizes. This magnet can be integrated to eliminate foreign metallic material from entering the moulding cell. It connects simply into the material line and as the material passes, metal adheres to the Magic Catch™ internal rod, preventing it from contaminating the material being processed. Simply open the Magic Catch™ and wipe the debris off.



Standard-type

Y-type



	Product Code	Type	Port Size
Magic Catch™ Polished Stainless Steel Construction	MATS-MC7000-38 STD	Standard	1.5"
	MATS-MC7000-50 STD	Standard	2"
	MATS-MC-227-25-38 STD	Standard	1.5"
	MATS-MC-227-25-50 STD	Standard	2"
	MATS-MC-227-25-38 Y	Y Type	1.5"
	MATS-MC-227-25-50 Y	Y Type	2"



Reliable And Accurate Heating And Cooling Circuits

- Stainless Steel heaters / tanks
- Insulated water tanks
- Safety thermostat
- 24 month warranty
- Speck pumps
- SMS brass solenoid valves (cooling & filling)

There are two families of TCU's available:

Water TCU's from 25°C to 180°C with heating powers from 3 to 72kw.

Oil TCU's up to 300°C with heating powers from 6 to 72 kW.

Working with water offers advantages especially at high temperatures, its performance in heat transfer much better than oil.

Water as a means of temperature control also offers many advantages from an ecological point of view.

Working with oil up to 300°C is necessary when the working temperature must be above 180°C that we offer with water equipment.

Unlike water, oil has much more thermal stability.

*** Other TCU Model Water and Oil Units available. For more information, please contact info@hales.com.au**

Maximum Temp.		PID control	Process Connections Input/Output			Cooling Connections Input/Output			Voltage (V/Ph/Hz)	
90°		Yes	3/4"			1/2"			400/3/50/PE	
Product Code	Heating Power (Kw)	Cooling Power (Kw)	Tank Capacity (Lt)	Pump Max. Flow Lt/min	Pump Max Pressure (Bar)	Pump Power (Kw)	Dimensions	Weight (Kg)	Solid State Relay Options	Reverse / Vacuum Function
MAR-Smart Basic	3 / 6	40	8	60	3.8	0.5	240 x 450 x 380 h	35	with or without SSR	No
MAR-Smart W	6 / 9	40 / 60 / 80	12	60	3.8 / 5.8	0.5 / 1	285 x 570 x 500 h	35	with or without SSR	Yes
MAR-Smart 2 W	9 / 12 / 18	40 / 60 / 80	20	60 / 70	3.8 / 5.8	0.5 / 1	325 x 610 x 700h	40	SSR included as standard	Yes



Used for clearing blocked or badly corroded heating and cooling circuits on Injection Moulding Machines and Moulds. Even when not blocked a relatively thin layer of scale or corrosion can act as an insulator and have a huge impact on the efficiency of your circuit.

Simply fill up the pump with the de-scaling fluid, connect the pump to the inlet and outlet of the circuit and turn on the pump. Regular reversal of flow direction, either manual or automatic, speeds up operation and assists in dislodging any solid matter present in pipework and cooling circuits.

By using the pump together with the recommended range of de-scaling fluids it is possible to remove both rust and lime scale deposits.

DE-SCALING KIT

Product Code	Capacity (kg)	Motor	Reverser	Tank
DP15ASK	40 l/min.	0,17 hp	Automatic	15 l.
DP30ASK	90 l/min.	0,45 hp	Automatic	24 l.

DE-SCALING UNIT PUMP UNIT ONLY

Product Code	Capacity (kg)	Fittings	Motor	Reverser	Tank
DP15A	40 l/min.	1/2"	0,17 hp	Automatic	15 l.
DP15M	48 l/min.	1/2"	0,20 hp	Manual	15 l.
DP30A	90 l/min.	1/2"	0,45 hp	Automatic	24 l.
DP30M	90 l/min.	1/2"	0,45 hp	Manual	24 l.



Remover Liquid - Concentrated de-scaling liquid with powerful reaction for systems and heat exchangers.

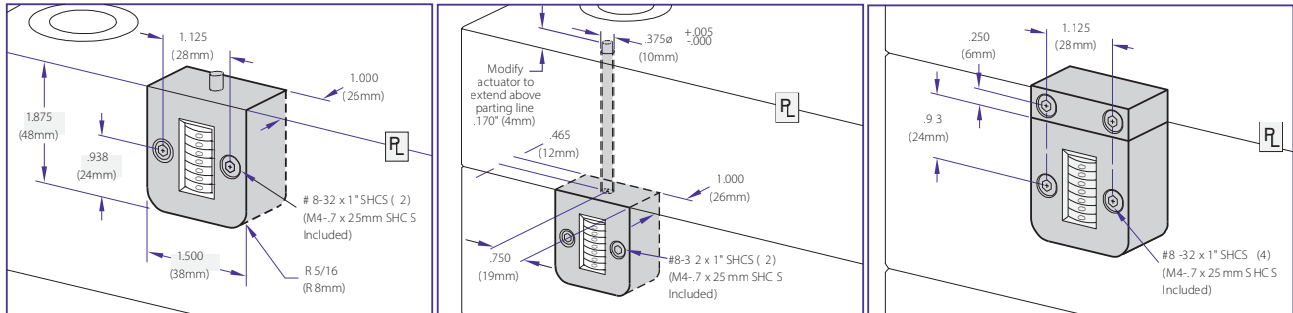
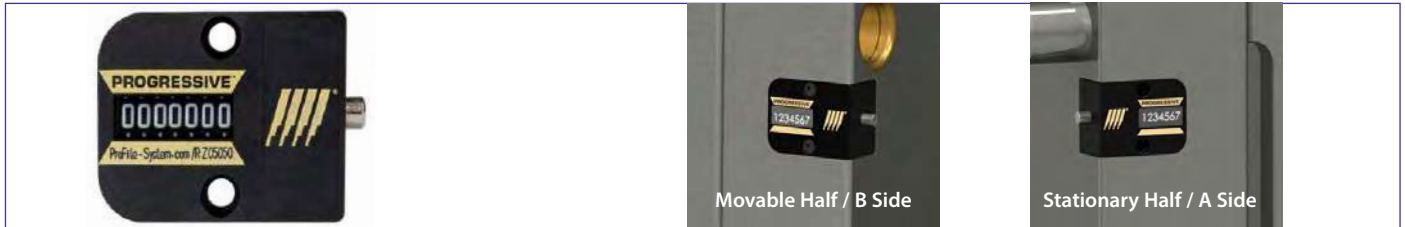
Remover Plus Liquid - Concentrated de-scaling liquid (non-fuming), degreasing action, for systems & heat exchangers.

Remover Plus Powder - Concentrated de-scaling powder (non-corrosive, non-fuming) for systems and heat exchangers.

Neutraliser - Neutralising powder to remove residual acidity after de-scaling systems and heat exchangers. Also suitable for neutralising de-scaling chemicals after use, prior to draining them.

DE-SCALING FLUIDS

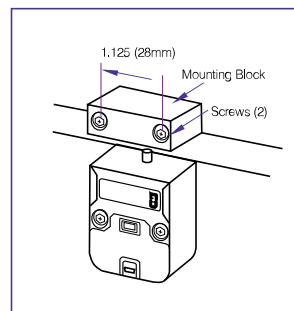
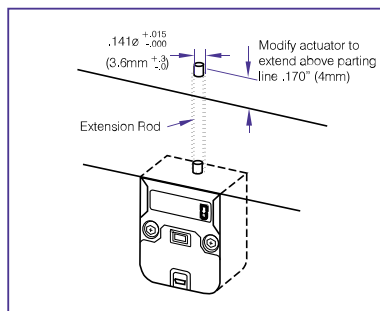
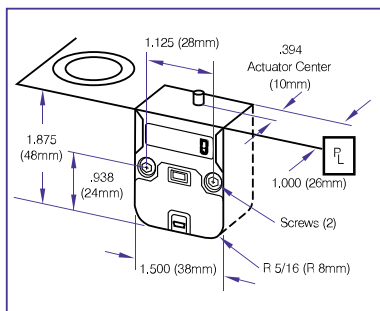
Product Code	Description	Weight	Copper	Steel	S/Steel	Alum.	Brass	Tin	Light Alloys	Gal. Iron
RL10	Remover Liquid	10kg	*	*			(*)			
RL10P	Remover Plus Liquid	10kg	*	*			(*)			
RP10	Remover Plus Powder	10kg			*	*	*	*	*	
NP10	Neutraliser	10kg	*	*	*	*	*	*	*	*



The CounterView positively monitors mould activity, validates process monitoring data, and assists mould maintenance procedures

- Maximum operating temperatures:– 250 °F (120 °C) Standard CounterView
- Counter: Non-resettable mechanical, 7-digit
- Available for installation on the movable or stationary halves and with extensions
- Heat protection insulators available on request
- Cover Plates for protection are sold separately.

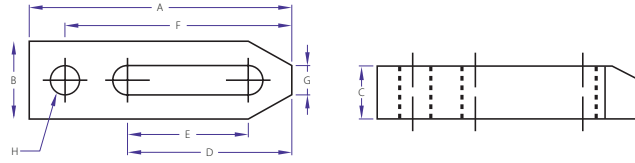
Product Code	Description
CVPL-B	Standard: Parting Line
CVIN-B	Standard: Internal Extension
CVPL-A	Standard: Parting Line
CVIN-A	Standard: Internal Extension
CVE-EXT	External Mounting Block including #8-32 x 1" (2) and M4 x 25mm screws (2)



The CvE Monitor tracks tool activity, allowing users to view data on the display or from comprehensive reports using OnDemand or the new CvE Live System. Features:

- 7-digit LCD display with a push button to move through the display modes
- 16GB flash drive for file storage
- Replaceable battery
- Water resistant - ingress protection rating of IP58
- Mini USB connectivity for data retrieval with cables sold separately
- Maximum temperature: 190° F (90° C)
- Heat protection insulators available on request
- Recommended mounting is on the stationary half of the mould
- Dimensional compatibility with Progressive's mechanical CounterViews

Product Code	Description
CVE	CvE Monitor v2 mould Maker/moulder version including #8-32 x 1" SHCS (2) and M4 x 25mm SHCS (2)
CVE-INT	Internal Extension Rod (8"/200mm) including a hex key for CvE Monitor set screw removal.
CVE-EXT	External Mounting Block including #8-32 x 1" SHCS (2) and M4 x 25mm SHCS (2)



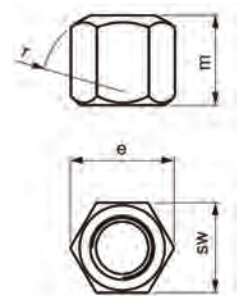
Product Code	Model	A	B	C	D	E	F	G	H
MC12	M12 x 100mm	100	32	19	71	43	88	13	M12
MC16	M16 x 150mm	150	37	25	100	60	130	17	M16
MC20	M20 x 200mm	200	50	32	114	82	185	21	M20
MC25	M25 x 250mm	250	70	45	157	100	224	27	M24

Hexagon Nut



- Hardened
- Black Coating

Product Code	SW	e	m	r	Weight
MC-HN-M12	19 mm	21.9 mm	18 mm	17 mm	25 g
MC-HN-M16	24 mm	27.7 mm	24 mm	22 mm	55 g
MC-HN-M20	30 mm	34.6 mm	30 mm	27 mm	110 g
MC-HN-M24	36 mm	41.5 mm	36 mm	32 mm	190 g

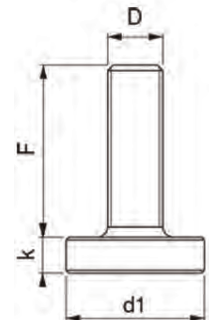
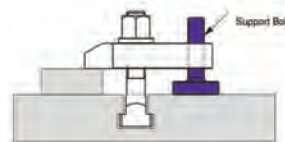


Clamp Support Bolt



- Black Coating

Product Code	d1	k	Weight
MC-SB-M12x50	36 mm	10 mm	110 g
MC-SB-M16x62	45 mm	13 mm	240 g
MC-SB-M20x62	50 mm	13 mm	320 g
MC-SB-M24x116	50 mm	14 mm	555 g

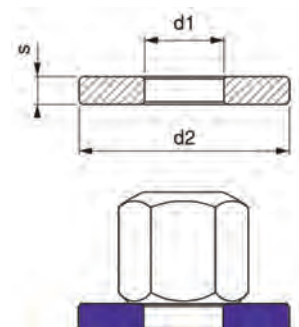


Thick Washer



- Hardened
- Black Coating

Product Code	d1	d2	s	Weight
MC-TW-M12	13 mm	35 mm	5 mm	30 g
MC-TW-M16	17 mm	45 mm	6 mm	60 g
MC-TW-M20	21 mm	50 mm	6 mm	70 g
MC-TW-M24	25 mm	60 mm	8 mm	140 g





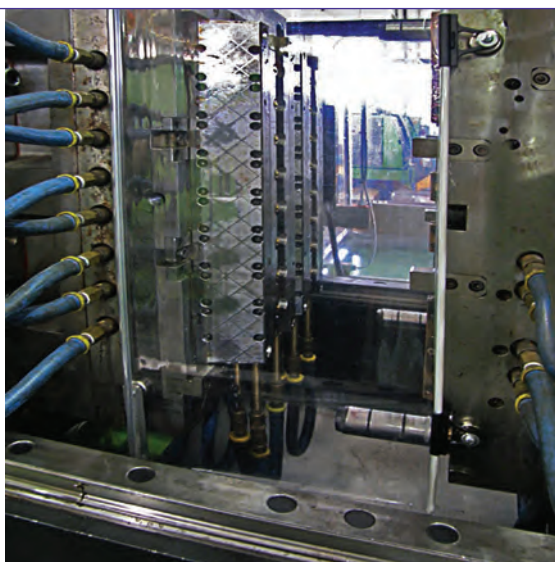
Product Code	Attachment Bolt Size	Overall Length
BC12	12mm	100mm
BC16	16mm	125mm
BC20	20mm	160mm
BC24	24mm	200mm

Hopper Magnets



Product Code	Length	Width	Height	Type
HM-5R	120	112	90	Round Type - 5 Bars
HM-5S	120	112	90	Square Type - 5 Bars
HM-7R	180	175	75	Round Type - 7 Bars
HM-7S	180	175	75	Square Type - 7 Bars
HM-9R	230	218	75	Round Type - 9 Bars
HM-9S	230	218	75	Square Type - 9 Bars

Mould Curtain - Scatterguard®



Scatterguard® allows easy access to the mould with the ultra low profile design meaning that the mould screens can be installed even when there are lots of water connectors on the side of the mould.

- Ultra Low Profile Design.
- Crystal Clear Mould Screen.

Product Code	Mould Height	Max. Width	Package
SG-1	20 cm	55 cm	(set of 2 pieces)
SG-2	30 cm	55 cm	(set of 2 pieces)
SG-3	40 cm	55 cm	(set of 2 pieces)
SG-4	50 cm	55 cm	(set of 2 pieces)
SG-5	60 cm	55 cm	(set of 2 pieces)



- Pressure test unit - easy leakage test of mould circuits
- Supplied with connecting hose and water tank

Product Code	Pressure
MP60	0-60 bar

Bernzomatic -Torch Kit & Accessories



Bernzomatic High Heat Torch Kit

- Trigger start ignition
- 30% hotter than propane
- Powerful swirl flame
- Continuous flame lock

MAP-PRO 400g Disposable Gas Cylinder

- Faster heat transfer than propane gas
- Flame temperature in air 1982.2 °C

Butane Bottle

- 5.5 oz. cylinder
- Flame temperature in air of 1760°C

Product Code	Description
BERN TS4000TK	High Heat Torch Kit
BERN 1811120	Map Pro Gas Cylinder
BERN BF55	Fuel Cylinder

Cleaner Degreaser Spray - Clean Spray - Food Grade



Foodmax Clean Spray is a food grade cleaner degreaser. This non-toxic formulation has been formulated to effectively clean grease and oil residue, formulated from a citrus oil derivative which is non-toxic, non-caustic, biodegradable and can be used safely with minimal protective equipment.

Product Code	Description	Pack Size
FM-CLEANSpray -040	Foodmax Clean Spray	400g Aerosol

Release S Spray - Food Grade



Foodmax Release S Spray is a silicone based fluid, anti-adherent and lubricating incorporating high temperature resistance. NSF approved for the use in food processing equipment where incidental contact with food may occur. Excellent as lubricating product for packaging transport lines and for low load applications. Also suitable as anti-adherent for any type of equipment, de-moulding of all type of plastics and rubbers and surface polisher.

Product Code	Description	Pack Size
FM-RELEASE S SPRAY -040	Foodmax Release S Spray	400g Aerosol



A proven release agent to prevent sticking in mould cavities
Australian Made

NEW Packaging; same great product!



Product Code	Size
SILICONE MOULD RELEASE	300g Aerosol

Paintable Mould Release



A premium quality release agent which enables plastic parts to be printed, painted, hot stamped, vacuum plated and metalised
Australian Made

NEW Packaging; same great product!



Product Code	Size
PAINTABLE MOULD RELEASE	300g Aerosol

Tool & Die Parts Cleaner



A heavy duty formulation designed to clean injection mould, tools and dies after production runs and prior to commencement of new jobs.
Australian Made

NEW Packaging; same great product!



Product Code	Size
DIE CLEANER	400g Aerosol

Tool & Die Protector



A heavy duty formulation designed to protect tools, injection moulds and dies from oxidization and rusting during storage in between production runs. Penetrates tools and mould removes moisture from cavities and mould. Leaves a protective film of lubrication oils and a rust preventative coating.
Australian Made

NEW Packaging; same great product!



Product Code	Size
DIE PROTECTOR	400g Aerosol



Anti-corrosion agents provide dismantled dies, moulds and parts with long-term protection against corrosion. This ensures that your mould is always ready for use, maintaining value and efficiency.
Sprays on green in colour and moulds off easily.
Conforms to NSF guidelines.

Product Code	Size
MPW501FG	500 ml Aerosol

Green Mould Protect



Anti-corrosion agents provide dismantled dies, moulds and parts with long-term protection against corrosion. This ensures that your mould is always ready for use, maintaining value and efficiency

Product Code	Size
MPG 501	500 ml Aerosol

Heavy Duty Polymer Remover



Eliminates tough plastic residues from moulds and dies, including those stubborn bits left by cracking. Designed with efficiency in mind, this cleaner not only saves you time in production but also maintains the dimensional accuracy and pristine surface of your plastic parts and mouldings.
Conforms to NSF guidelines.

Product Code	Size
MPR 502FG	500 ml Aerosol

Mould Protect - Acid Neutraliser



Mould Protect - Long Term with Acid Neutraliser is specifically designed for PVC moulding applications. This advanced protective solution provides long-term protection for your moulds by neutralising acids and preventing corrosion, ensuring your equipment remains in optimal condition.

Product Code	Size
MPP501	500 ml Aerosol



Non-soiling lubricants that keep moving parts running smoothly and prevent damage due to breakage and seizing.

Product Code	Size
MLF500FG	500g tub
MLF080FG	80g tube
MLF501FG	500 ml spray

Mould Polish



Mould Polish

This superior quality mould polish is perfect for cleaning and polishing steel moulds. It safely and easily removes oxidation, corrosion, stains and rust. It produces a brilliant reflective lustre and leaves an invisible protective coating to ensure a long lasting shine.

Product Code	Size
MCP080	80g Tube

Copper Anti-Seize



Mouldpro Copper Anti-Seize ensures rapid and easy assembly of threaded parts. It allows correct torque to be applied by eliminating thread interference.

Product Code	Size
MCS 500	500g tub
MCS 80	80g tube

Spray Can Holder



Stainless Steel aerosol holder, available to suit 2, 3 or 4 cans. Specifically designed and manufactured for mounting onto machines. Allows convenient positioning of fundamental aerosols.

Product Code	Size
MCH-02	Holds 2 Cans
MCH-03	Holds 3 Cans
MCH-04	Holds 4 Cans



Food Grade Strong Wipes With Powerful Cleaner
NSF A1 Approved.

Foodmax Clean Wipes are strong two-sided cleaning wipes containing a powerful cleaner in a resealable container.

They are suitable to clean equipment, machine parts, work areas, tools, hands, and many other surfaces. Effectively removes heavy pollutants like oil, greases, tar, PU foam, resin, soot, grass stains, paint, ink, marker, toner and graffiti.

Product Code	Size
FM-CLEANWIPES	Tub of 100 wipes

Purge - Food Grade



Food Safe Purging Cream

Hales Purge is specific for the cleaning of screws, cylinders, nozzles, hot runners, extrusion dies, moulds and any metal surface. Removes charred residue, black spots, coloured pigments and all left over material deposits, for all thermoplastic and thermosetting.

Working temperature between 70°C and 420°C,

Product Code	Size
PURGE	Sachet

Purging Emulsion - Coratex



Purging Emulsion for Plastic Processing Machines

- Purges: Barrels and screws, nozzles and hot runner tooling of extrusion and injection moulding machines
- Enables fast change of raw material and higher production efficiency
- Eliminates extra stubborn contamination, oxidation traces and coking residues
- CORATEX HT is VOC and ammonia-free, has a pleasant orange scent and is physiologically harmless when used according to directions. Perfectly suited for hand polishing individual machine parts

Product Code	Size
CORATEX-STD	800ml
CORATEX-HT	800ml

Oil Absorbant Clay & Sheets



Clay

All purpose spill absorber, made from 100% absorbant granules which are effective at absorbing spills and liquids. Environmentally safe and easy to use 20kg bags.

Sheets

Extremely good absorption ability and capacity for all types of organic fluids, i.e.: motor oils, hydraulic oils, gear oils, organic solvents, diesel oil, petrol, etc.

Product Code	Pack Size
ABSORBCLAY	20 Kg Bag
ABSORBSHEET 100	100 Sheets (40 x 50cm)



Safekote 60

A high-temperature, anti-seizing compound with high thermal conductivity for cartridge and band heaters and nozzle threads.

Product Code	Size
SAFEKOTE 60	340g tub

Nano Plas Mould Coating



Nano Plas Mould Coating

Releases plastic parts for up to 300,000 cycles, part design dependant. Reduces cycle times, semi permanent

Product Code
NANO-FG-10ML-KIT

Zap-Ox Cleaner



Zap-Ox Stain Remover

Removes all rust, oxidation, build-up, stains, weld discolouration and more.

Product Code	Size
NANO-ZO-16	475ml Bottle

Sprue Reamers



2 Sizes Available

Sprue Reamers are suitable for both machine and hand use and are made from High Speed Steel. 6 flute left hand slow spiral design with a 1/2" diameter parallel shank.

Product Code	Code Number	Taper Degrees	Flute			Overall Length
			Small Dia.	Large Dia.	Length	
CRS1202	1/2	2	.120"	.300"	5"	7"
CRS1203	1/3	3	.120"	.390"	5"	7"



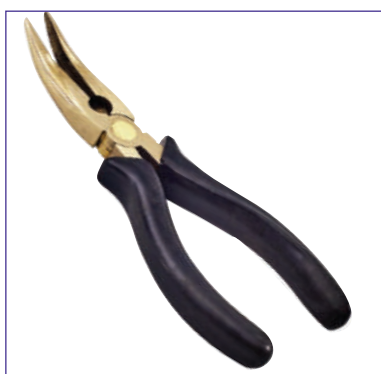
Product Code	Size	Diameter	Weight	Length	Faces
TH208	A	25 MM	355 G	230MM	COPPER RAWHIDE
TH210	1	32 MM	710 G	270MM	COPPER RAWHIDE
TH212	2	38 MM	1070 G	305MM	COPPER RAWHIDE
TH214	3	44 MM	1600 G	305MM	COPPER RAWHIDE
TH216	4	50 MM	2380 G	355MM	COPPER RAWHIDE
TH312	2	38 MM	1070 G	305MM	COPPER COPPER
TH314	3	44 MM	1600 G	305MM	COPPER COPPER
TH316	4	50 MM	2380 G	355MM	COPPER COPPER

Bevelled Edge Scraper



Product Code	Blade Width	Blade Length	Total Length
BSC125L	1"/25mm	7"/177mm	10 3/4"/273mm
BSC125	1 1/4"/32mm	4"/100mm	8"/200mm
BSC200	2"/50mm	4"/100mm	8"/200mm

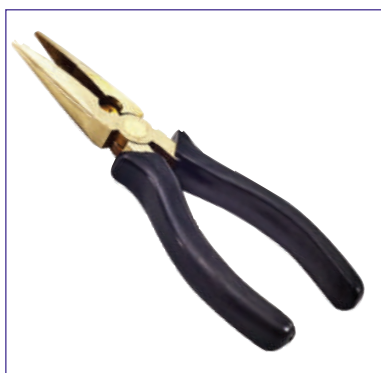
Bronze Angled Pliers



High quality bronze pliers, reduce risk of damaging the mould.
Angled for hard to reach places.

Product Code	Size
BC60	6"/150mm
BC90	9"/230mm

Bronze Long Nose Pliers



High quality bronze pliers, reduce risk of damaging the mould.

Product Code	Size
BL60	6"/150mm
BL90	9"/230mm

125mm Sprue Snips



Total Length: 130mm
 Blade Length: 19mm
 Usable Blade Opening at Tip: 13.5mm
 Usable Blade Opening at Base: 5.5mm

Product Code	Description
MCTS125	Model: 125mm

150mm Sprue Snips



Total Length: 155mm
 Blade Length: 21mm
 Usable Blade Opening at Tip: 16mm
 Usable Blade Opening at Base: 6mm

Product Code	Description
MCTS150	Model: 150mm

180mm Sprue Snips



Total Length: 185mm
 Blade Length: 25mm
 Spring Type Coil

Product Code	Description
MCTS180	Model: 180mm

Flat/Angled Back Sprue Snips



Product Code	Description
MC160S	Flat Back Japanese Quality Snips
MC170S	Angled Back Japanese Quality Snips



A simple but effective tool for removing over packed plastic material from sprues or hot runner systems. The knock-out bar combines a tough steel rod with threaded brass replaceable tips that prevent damage to the mould surface. The steel rod never wears out and the end will not 'mushroom' like a solid brass rod, the threaded brass tips are quickly replaced ensuring that the rod never gets too short and minimises the risk of burning.

Product Code	Description
704-31	Knock Out Bar set (tip + handle)

Pry Bar- Radius Head



Premium bronze alloy pry bars ideal for splitting mould plates without the risk of damage or scratches to the surface of the mould.

- Aluminium Bronze Alloy
- Non-Sparking

Product Code	Hex	Length (mm)	Weight
MPB-500	5/8"	18" (460)	800 g

Leather Gloves



Leather Gauntlet Gloves

Ideal for handling hot machine parts

Product Code	Size
WG06/R8	One Size

Work Finisher Ceramic & Throwaway Knives



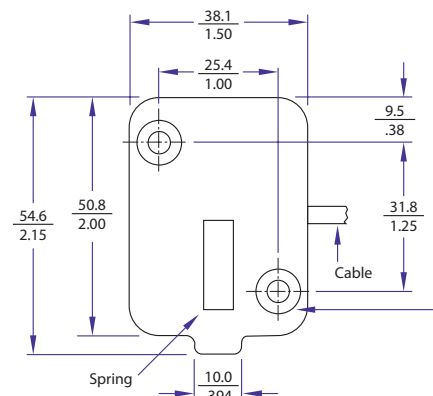
Small and large Work Finishers offer deburring of hard plastics, without the possibility of cutting your hand.

Product Code	Description
WF620	Small Work Finisher Knife
WF1540	Large Work Finisher Knife
TSK	145mm Long Disposable Fixed Knife Blade

**Smartflow Thinswitch® Limit Switch**

Designed to verify ejector plate return. The Thinswitch helps prevent accidental mould close in injection moulding applications by providing a position switch that is tied to the injection moulding machine control. Two switches can be used in series for larger moulds to ensure the ejector plate return, preventing costly mould damage.

Product Code	Description	Max Temp.
T-222	Thinswitch® Limit Switch	175°F / 79.4°C

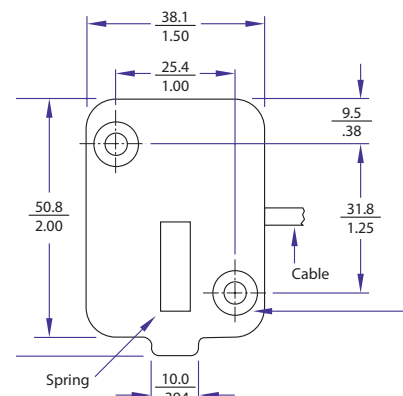


Limit Switch - Thinswitch® Liquid Resistant

**Thinswitch® Liquid Resistant Limit Switch**

- Designed to verify ejector plate return in areas where occasional water or oil spray is present
- Helps prevent accidental mould close by providing a position switch that is tied to the machine control
- Uses the same mounting hole locations as the original Thinswitch

Product Code	Description	Max Temp.
HT-291-LR	Thinswitch® Liquid Resistant	250°F / 121°C

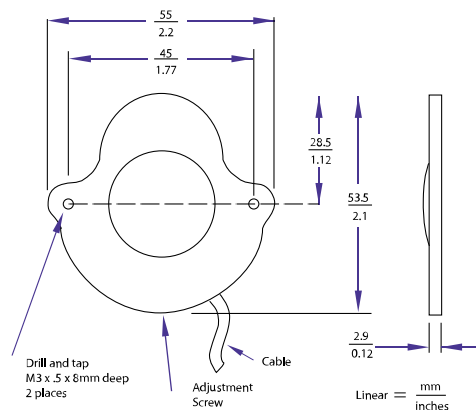


Limit Switch - Thinswitch® Global

**The Global Thinswitch® Limit Switch**

- Liquid resistant · Over 14 million cycle life
- Only 3 or 4mm Thick · Temperature max. 79.4°C @ 70 m A load
- 2 minute fitting (No milling necessary)

Product Code	Description	Max Temp.
TW-222-LR	Global Thinswitch	175°F / 79.4°C

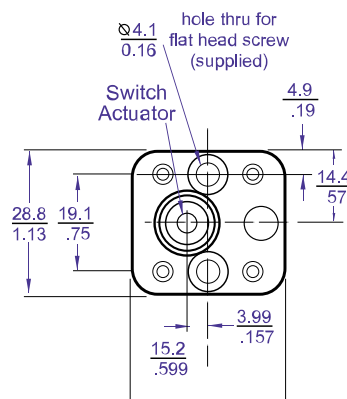


Limit Switch - Smartlock® Core Slide Retainer

**Smartlock® Core Slide Retainer & Limit Switch**

- Over 10 million cycle life
- Temperature max. 79.4°C @ 2 A load
- 17-27 pounds holding force
- Superior flush mounted switch
- Optional High Temperature model max. 121.1°C @ 3.5 A load

Product Code	Description	Max Temp.
SL-222	Smart Lock	175°F / 79.4°C





Noga Burr Rapid 3 & Rapid 5

Will do almost all of your deburring jobs, including coarse to extra fine deburring operations..

3 includes: NG-1 handle, S10, S20 and S35 blades.

5 includes: NG-1 handle, S10, S20, S35, S101 and S202 blades.

Product Code	Description
NNG1003	Handle, S10, S20 and S35 blades
NNG1005	Handle, S20, S35, S101 and S202 blades

Deburring Tools - Liza Burr



Double end blade holder to utilize both N and S blades.

Telescopes from 20-110 mm with N Blades.

20-94 mm with S Blades.

Includes: Uni-handle, SN-holder, N1 & N2 blades.

Product Code	Description
NLB1000	UN1000 Handle, SN Holder, N1& N2 blades with extension arm.

Deburring Tools - Rapid Burr



12mm hexagonal painted handle and S10 Blade.

Steel housing for long life of handle.

Blade is replaceable.

Product Code	Blade Compatibility
NRB1005	3.2mm blades

Deburring Tools - Teddy Burr



Designed for hard to reach locations.

Holds 2.6mm blades.

8mm painted hexagonal aluminium handle and N1 blade.

Blade is replaceable.

Product Code	Blade Compatibility
NTB1000	2.6mm blades

Deburring Tools - Edge-Off



Disposable tool.

A handy pocket clip is a standard feature of this tool.

Includes: S10 blade mounted in an 8mm painted hexagonal aluminium handle.

Product Code	Blade Compatibility
NEO1015	S10 blade

The standard tool for Counter-sinking, useful for chamfering deep holes.

Product Code	Description
NNG3100	Noga Counter-sink deburring tool



Deburring Tools - Scraper

Heavy Duty double end scraper for longer tool life, can be locked in required position.

Product Code	Blade Compatibility
NSC1000	Double ended T120 triangular scraper



Deburring Tools - Blades

Noga S10 Swivel Blade

Best for steel, aluminium and plastic.

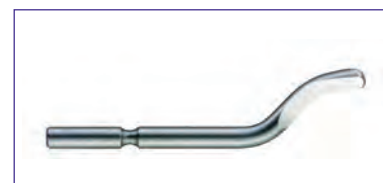
Product Code	Angle	Pack Quantity
NBS1010	40°	10 pieces in pack



Noga S10 Heavy Duty Swivel Blade

Best for brass and cast iron.

Product Code	Angle	Pack Quantity
NBS2010	60°	10 pieces in pack



Noga S101 Blade

Best for fine edges on all materials. For right hand users.

Product Code	Angle	Pack Quantity
NBK1010	40°	10 pieces in pack



Noga S150 Blade

Best for holes as small as 1.5mm. For right hand users.

Product Code	Angle	Pack Quantity
NBK3010	45°	10 pieces in pack



Noga N1 Swivel Blade

Best for steel, aluminium and plastic.

Product Code	Angle	Pack Quantity
NBN1010	40°	10 pieces in pack





**GLOBAL STRENGTH
LOCAL KNOWLEDGE**



CONTACT HALES

www.hales.com.au

info@hales.com.au

1300 660 854

VICTORIA

45 Woodlands Drive
Braeside
Victoria 3195
Phone: (03) 8587 1600

NEW SOUTH WALES

Phone: (02) 9791 1011

QUEENSLAND

Phone: (07) 3272 7500

SOUTH AUSTRALIA

Phone: (08) 8297 1722

SINGAPORE

Hales Asia Pte Ltd
2 Ang Mo Kio Street 64
#04-03B
Econ Industrial Building
Singapore 569084
Tel: +65 6754 7077